

For Research Use Only

# CoraLite® Plus 488-conjugated pan-RAS Recombinant antibody



Catalog Number: CL488-81615

## Basic Information

**Catalog Number:**

CL488-81615

**Size:**

1000 ug/ml

**Source:**

Rabbit

**Isotype:**

IgG

**Immunogen Catalog Number:**

AG2700

**GenBank Accession Number:**

BC013572

**GeneID (NCBI):**

3845

**UNIPROT ID:**

P01116

**Full Name:**

v-Ki-ras2 Kirsten rat sarcoma viral oncogene homolog

**Calculated MW:**

188 aa, 21 kDa

**Observed MW:**

21 kDa

**Purification Method:**

Protein A purification

**CloneNo.:**

2122

**Recommended Dilutions:**

IF/ICC 1:50-1:500

**Excitation/Emission maximum wavelengths:**

493 nm / 522 nm

## Applications

**Tested Applications:**

IF/ICC, FC (Intra)

**Species Specificity:**

human, mouse, rat, pig

**Positive Controls:**

IF/ICC : HeLa cells,

## Background Information

The 21 kDa guanine-nucleotide binding proteins (K-Ras, H-Ras, and N-Ras) belong to the Ras oncogene family, whose members are related to the transforming genes of mammalian sarcoma retroviruses. K-Ras, H-Ras, and N-Ras have similar structure and sequences. These proteins can bind GTP and GDP, and they have intrinsic GTPase activity. The ras genes are ubiquitously expressed although mRNA analysis suggests different level expression in tissue. Mutations in each ras gene frequently were found in different tumors, suggesting their involvement in the development of specific neoplasia. This antibody can recognize K-Ras, H-Ras, and N-Ras.

## Storage

**Storage:**

Store at -20°C. Avoid exposure to light. Stable for one year after shipment.

**Storage Buffer:**

PBS with 50% Glycerol, 0.05% Proclin300, 0.5% BSA, pH 7.3.

Aliquoting is unnecessary for -20°C storage

For technical support and original validation data for this product please contact:

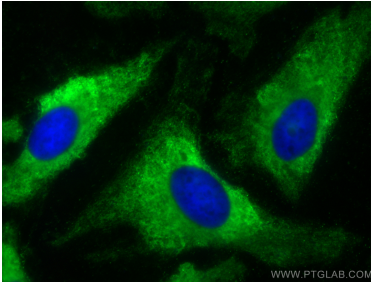
T: 4006900926

E: [Proteintech-CN@ptglab.com](mailto:Proteintech-CN@ptglab.com)

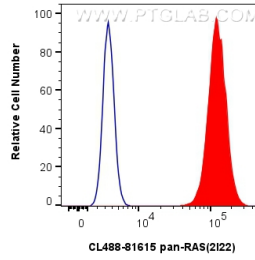
W: [ptgcn.com](http://ptgcn.com)

**This product is exclusively available under Proteintech Group brand and is not available to purchase from any other manufacturer.**

## Selected Validation Data



Immunofluorescent analysis of (-20°C Methanol) fixed HeLa cells using CoraLite® Plus 488 pan-RAS antibody (CL488-81615, Clone: 2I22) at dilution of 1:200.



1x10<sup>6</sup> HeLa cells were intracellularly stained with 0.4 ug CoraLite® Plus 488-conjugated pan-RAS Recombinant antibody (CL488-81615, Clone:2I22) (red), or 0.4 ug CoraLite® Plus 488-conjugated Rabbit IgG control Rabbit PolyAb (CL488-30000) (blue). Cells were fixed with 4% PFA and permeabilized with Flow Cytometry Perm Buffer (PF00011-C).