

For Research Use Only

CoraLite® Plus 488-conjugated G3BP2 Recombinant antibody



Catalog Number:CL488-82080-4

Basic Information

Catalog Number:

CL488-82080-4

Size:

1000 µg/ml

Source:

Rabbit

Isotype:

IgG

Immunogen Catalog Number:

AG9355

GenBank Accession Number:

BC011731

GeneID (NCBI):

9908

UNIPROT ID:

Q9UN86

Full Name:

GTPase activating protein (SH3 domain) binding protein 2

Calculated MW:

482aa,54 kDa; 449aa,51 kDa

Observed MW:

65-70 kDa

Purification Method:

Protein A purification

CloneNo.:

230275D6

Recommended Dilutions:

IF/ICC 1:50-1:500

Excitation/Emission maxima wavelengths:

493 nm / 522 nm

Applications

Tested Applications:

IF/ICC, FC (Intra)

Species Specificity:

human

Positive Controls:

IF/ICC : sodium arsenite treated HeLa cells,

Background Information

Stress granules (SGs) are cytoplasmic mRNA-protein condensates formed in response to cellular stressors, such as oxidative stress, ultraviolet radiation, and viral infection (1). The Ras-GTPase-activating protein-binding proteins (G3BPs), consisting of G3BP1 and G3BP2, are key nucleating factors essential for SG formation. They function to protect RNAs from harmful conditions. G3BP2 is mainly distributed in the cytoplasm and participates in the formation of stress granules, cell differentiation, proliferation, and signal transduction. Accumulating evidence has demonstrated that aberrant expression of G3BP2 contributes to cancer initiation and progression, such as high expression of G3BP2 increasing cell stemness, metastasis and chemoresistance in breast cancer.

Storage

Storage:

Store at -20°C. Avoid exposure to light. Stable for one year after shipment.

Storage Buffer:

PBS with 50% Glycerol, 0.05% Proclin300, 0.5% BSA, pH 7.3.

Aliquoting is unnecessary for -20°C storage

For technical support and original validation data for this product please contact:

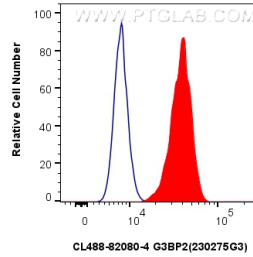
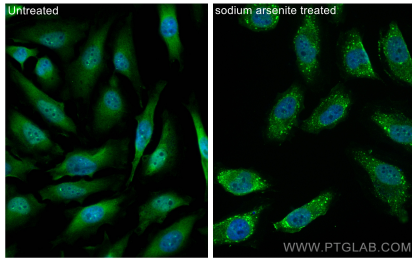
T: 4006900926

E: Proteintech-CN@ptglab.com

W: ptgcn.com

This product is exclusively available under Proteintech Group brand and is not available to purchase from any other manufacturer.

Selected Validation Data



Immunofluorescent analysis of (4% PFA) fixed sodium arsenite treated HeLa cells using CoraLite® Plus 488 G3BP2 antibody (CL488-82080-4, Clone: 230275D6) at dilution of 1:200.

1×10^6 U-2 OS were intracellularly stained with 0.8 ug CoraLite® Plus 488-conjugated G3BP2 Recombinant antibody (CL488-82080-4, Clone:230275D6)(red), or 0.8 ug CoraLite® Plus 488-conjugated Rabbit IgG control Rabbit PolyAb (CL488-30000) (blue). Cells were fixed with 4% PFA and permeabilized with Flow Cytometry Perm Buffer (PF00011-C).