

For Research Use Only

CoraLite® Plus 488-conjugated Phospho-STAT1 (Tyr701) Recombinant antibody

Catalog Number: CL488-82674-10



Basic Information

Catalog Number:

CL488-82674-10

Concentration:

1000 ug/ml

Source:

Rabbit

Isotype:

IgG

GenBank Accession Number:

BC002704

GeneID (NCBI):

6772

UNIPROT ID:

P42224

Full Name:

signal transducer and activator of transcription 1, 91kDa

Calculated MW:

83 kDa

Observed MW:

84-91 kDa

Purification Method:

Protein A purification

CloneNo.:

1C5

Excitation/Emission maxima wavelengths:

493 nm / 522 nm

Applications

Tested Applications:

FC (Intra)

Species Specificity:

human

Background Information

STAT1 (signal transducers and activators of transcription 1) is a member of the STAT protein family. STAT family members are phosphorylated by the receptor associated kinases, and then form homo- or heterodimers that translocate to the cell nucleus where they act as transcription activators. The phosphorylation of STAT1 at Tyr701 promotes the dimerization of STAT1 and its translocation into the nucleus where it binds the GAS promoter to allow the transcription of inflammatory response genes (PMID: 31408005). The transcript of STAT1 undergoes alternative splicing, resulting in two isoforms: STAT1 α (91 kDa) and STAT1 β (84 kDa) (PMID: 20159032).

Storage

Storage:

Store at -20°C. Avoid exposure to light. Stable for one year after shipment.

Storage Buffer:

PBS with 50% Glycerol, 0.05% Proclin300, 0.5% BSA, pH 7.3.

Aliquoting is unnecessary for -20°C storage

For technical support and original validation data for this product please contact:

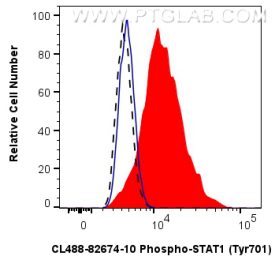
T: 4006900926

E: Proteintech-CN@ptglab.com

W: ptgcn.com

This product is exclusively available under Proteintech Group brand and is not available to purchase from any other manufacturer.

Selected Validation Data



1X10⁶ THP-1 cells untreated (dashed lines) or treated with IFN gamma which intracellularly stained with 0.25 ug Coralite® Plus 488 Phospho-Stat1 (Tyr701) Recombinant Antibody (CL488-82674-10, Clone:1C5)(red), or 0.25 ug Coralite® Plus 488 Rabbit IgG Isotype Control RecAb (CL488-98136, Clone: 240953C9) (blue). Cells were fixed with 4% PFA and permeabilized with 90% MeOH.