

For Research Use Only

# CoraLite® Plus 488-conjugated SHPK Recombinant antibody



Catalog Number: CL488-82875

## Basic Information

<b>Catalog Number:</b> CL488-82875	<b>GenBank Accession Number:</b> BC020543	<b>Purification Method:</b> Protein A purification
<b>Size:</b> 1000 µg/ml	<b>GeneID (NCBI):</b> 23729	<b>CloneNo.:</b> 230115A4
<b>Source:</b> Rabbit	<b>UNIPROT ID:</b> Q9UJH6	<b>Excitation/Emission maxima wavelengths:</b> 493 nm / 522 nm
<b>Isotype:</b> IgG	<b>Full Name:</b> sedoheptulokinase	
<b>Immunogen Catalog Number:</b> AG33893	<b>Calculated MW:</b> 478 aa, 52 kDa	

## Applications

**Tested Applications:**  
FC (Intra)

**Species Specificity:**  
Human

## Background Information

SHPK, also named CARKL, is a carbohydrate kinase involved in the phosphorylation of sugars as they enter a cell, inhibiting return across the cell membrane (PubMed: 10673275). SHPK is a sedoheptulose kinase of the pentose phosphate pathway. It acts as a modulator of macrophage activation through control of glucose metabolism (PMID: 22682222).

## Storage

**Storage:**  
Store at -20°C. Avoid exposure to light. Stable for one year after shipment.

**Storage Buffer:**  
PBS with 50% Glycerol, 0.05% Proclin300, 0.5% BSA, pH 7.3.

**Aliquoting is unnecessary for -20°C storage**

For technical support and original validation data for this product please contact:

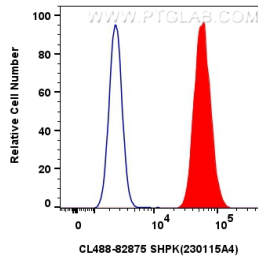
T: 4006900926

E: [Proteintech-CN@ptglab.com](mailto:Proteintech-CN@ptglab.com)

W: [ptgcn.com](http://ptgcn.com)

**This product is exclusively available under Proteintech Group brand and is not available to purchase from any other manufacturer.**

## Selected Validation Data



1x10<sup>6</sup> U2OS cells were intracellularly stained with 0.8 ug Coralite® Plus 488 SHPK Recombinant Antibody (CL488-82875, Clone:230115A4)(red), or 0.8 ug Coralite® Plus 488-conjugated Rabbit IgG control Rabbit PolyAb (CL488-30000) (blue). Cells were fixed and permeabilized with Transcription Factor Staining Buffer Kit (PF00011).