

For Research Use Only

# CoraLite® Plus 488-conjugated RORA Recombinant antibody

Catalog Number:CL488-82930



## Basic Information

Catalog Number:

CL488-82930

Size:

1000 µg/ml

Source:

Rabbit

Isotype:

IgG

Immunogen Catalog Number:

AG0944

GenBank Accession Number:

BC008831

GeneID (NCBI):

6095

UNIPROT ID:

P35398

Full Name:

RAR-related orphan receptor A

Calculated MW:

59 kDa

Observed MW:

60-66 kDa

Purification Method:

Protein A purification

CloneNo.:

230217G6

Recommended Dilutions:

IF/ICC 1:50-1:500

Excitation/Emission maxima  
wavelengths:

493 nm / 522 nm

## Applications

Tested Applications:

IF/ICC

Species Specificity:

human, rat

Positive Controls:

IF/ICC : HepG2 cells,

## Background Information

RORA is a steroid hormone receptor and has been implicated in the pathology of circadian rhythms, bone growth, angiogenesis, development of cones, cellular metabolism and a mediator in the immune and lipid metabolism pathways [PMID:21998696]. It binds DNA as a monomer to hormone response elements (HRE) containing a single core motif half-site preceded by a short A-T-rich sequence, which binds to the consensus sequence 5'-[AT][TA]A[AT][CGT]TAGGTCA-3'. Regulates a number of genes involved in lipid metabolism such as apolipoproteins AI, APOA5, CIII, CYP71 and PPAR gamma, in cerebellum and photoreceptor development including PCP2, OPN1SW, OPN1SM and ARR3, in circadian rhythm with BMAL1, and skeletal muscle development with MYOD1 [PMID:11053433,14570920].

## Storage

Storage:

Store at -20°C. Avoid exposure to light. Stable for one year after shipment.

Storage Buffer:

PBS with 50% Glycerol, 0.05% Proclin300, 0.5% BSA, pH 7.3.

Aliquoting is unnecessary for -20°C storage

For technical support and original validation data for this product please contact:

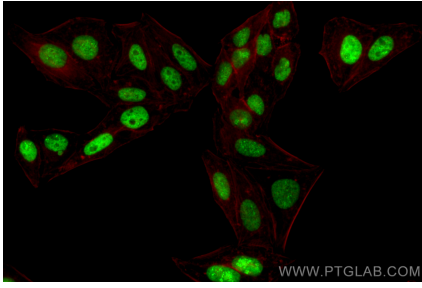
T: 4006900926

E: [Proteintech-CN@ptglab.com](mailto:Proteintech-CN@ptglab.com)

W: [ptgcn.com](http://ptgcn.com)

**This product is exclusively available under Proteintech Group brand and is not available to purchase from any other manufacturer.**

## Selected Validation Data



Immunofluorescent analysis of (4% PFA) fixed HepG2 cells using CoraLite® Plus 488 RORA antibody (CL488-82930, Clone: 230217G6) at dilution of 1:200.