

For Research Use Only

CoraLite® Plus 488-conjugated CUX2 Recombinant antibody

Catalog Number: CL488-82933

Featured Product



Basic Information

Catalog Number:

CL488-82933

Size:

1000 µg/ml

Source:

Rabbit

Isotype:

IgG

Immunogen Catalog Number:

AG18809

GenBank Accession Number:

BC151245

GeneID (NCBI):

23316

UNIPROT ID:

O14529

Full Name:

cut-like homeobox 2

Calculated MW:

1486 aa, 162 kDa

Observed MW:

162 kDa

Purification Method:

Protein A purification

CloneNo.:

230235G1

Recommended Dilutions:

IF/ICC 1:50-1:500

Excitation/Emission maxima
wavelengths:

493 nm / 522 nm

Applications

Tested Applications:

IF/ICC

Species Specificity:

human

Positive Controls:

IF/ICC : HeLa cells,

Background Information

Cut like homeobox 2 (CUX2) also named as, CDP2 or CUTL2, is a 1486 amino acid protein, which contains one homeobox DNA-binding domain and three CUT DNA-binding domains. CUX2 localizes in the nucleus and belongs to the CUT homeobox family. CUX2 may as a transcription factor be involved in neural specification.

Storage

Storage:

Store at -20°C. Avoid exposure to light. Stable for one year after shipment.

Storage Buffer:

PBS with 50% Glycerol, 0.05% Proclin300, 0.5% BSA, pH 7.3.

Aliquoting is unnecessary for -20°C storage

For technical support and original validation data for this product please contact:

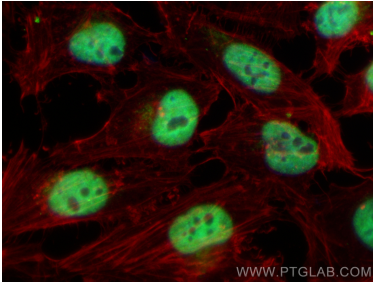
T: 4006900926

E: Proteintech-CN@ptglab.com

W: ptgcn.com

This product is exclusively available under Proteintech Group brand and is not available to purchase from any other manufacturer.

Selected Validation Data



Immunofluorescent analysis of (4% PFA) fixed HeLa cells using CoraLite® Plus 488 CUX2 antibody (CL488-82933, Clone: 230235G1) at dilution of 1:200, CL594-Phalloidin (red).