

For Research Use Only

# CoraLite® Plus 488-conjugated IFT140 Recombinant antibody

Catalog Number:CL488-82947-7



## Basic Information

Catalog Number:

CL488-82947-7

Size:

1000 µg/ml

Source:

Rabbit

Isotype:

IgG

Immunogen Catalog Number:

AG11119

GenBank Accession Number:

BC035577

GeneID (NCBI):

9742

UNIPROT ID:

Q96RY7

Full Name:

intraflagellar transport 140 homolog  
(Chlamydomonas)

Calculated MW:

1462 aa, 165 kDa

Observed MW:

150-165 kDa

Purification Method:

Protein A purification

CloneNo.:

230231D5

Recommended Dilutions:

IF/ICC 1:50-1:500

Excitation/Emission maxima  
wavelengths:

493 nm / 522 nm

## Applications

Tested Applications:

IF/ICC

Species Specificity:

human

Positive Controls:

IF/ICC : hTERT-RPE1 cells,

## Background Information

IFT140 is a subunit of intraflagellar transport complex A (IFT-A) which is involved in retrograde ciliary transport. RT-PCR analysis showed it is highly expressed in kidney, moderately in ovary, testis, prostate, and lung. IFT140 is localized to the base and tip of primary cilium. IFT140 has a pivotal role in development and function of ciliated cells, and mutations of IFT140 cause skeletal, renal, and retinal ciliopathies. It had been detected as a single band around 140-165 kDa in different reports (PMID: 20368623, 22282595).

## Storage

Storage:

Store at -20°C. Avoid exposure to light. Stable for one year after shipment.

Storage Buffer:

PBS with 50% Glycerol, 0.05% Proclin300, 0.5% BSA, pH 7.3.

Aliquoting is unnecessary for -20°C storage

For technical support and original validation data for this product please contact:

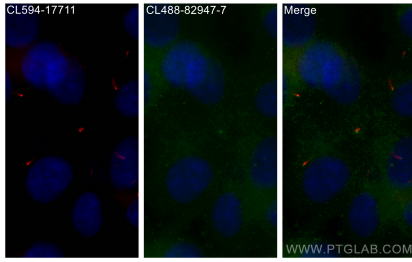
T: 4006900926

E: [Proteintech-CN@ptglab.com](mailto:Proteintech-CN@ptglab.com)

W: [ptgcn.com](http://ptgcn.com)

**This product is exclusively available under Proteintech Group brand and is not available to purchase from any other manufacturer.**

## Selected Validation Data



Immunofluorescent analysis of (-20°C Methanol) fixed hTERT-RPE1 cells using CoraLite® Plus 488 IFT140 antibody (CL488-82947-7, Clone: 230231D5 ) at dilution of 1:200, CoraLite®594 ARL13B antibody (CL594-17711, red).