

For Research Use Only

# CoraLite® Plus 488-conjugated BBS4 Recombinant antibody



Catalog Number: CL488-82961

## Basic Information

<b>Catalog Number:</b> CL488-82961	<b>GenBank Accession Number:</b> BC027624	<b>Purification Method:</b> Protein A purification
<b>Size:</b> 1000 µg/ml	<b>GeneID (NCBI):</b> 585	<b>CloneNo.:</b> 230303C2
<b>Source:</b> Rabbit	<b>UNIPROT ID:</b> Q96RK4	<b>Recommended Dilutions:</b> IF 1:50-1:500
<b>Isotype:</b> IgG	<b>Full Name:</b> Bardet-Biedl syndrome 4	<b>Excitation/Emission maxima wavelengths:</b> 493 nm / 522 nm
<b>Immunogen Catalog Number:</b> AG3430	<b>Calculated MW:</b> 519 aa, 58 kDa	
	<b>Observed MW:</b> 60 kDa	

## Applications

<b>Tested Applications:</b> IF/ICC	<b>Positive Controls:</b> IF : hTERT-RPE1 cells,
<b>Species Specificity:</b> Human	

## Background Information

BBS4 (Bardet-Biedl syndrome protein 4) is one of the early BBS proteins discovered, with 35 mutations reported to cause the BBS phenotype (PMID: 26762677). BBS4 undergoes localization to the centriolar satellites of centrosomes and basal body of primary cilia, where it takes part in recruiting cargo to centriolar satellites and allowing the formation of a functional centrosomal microtubule organizing center (MTOC) (PMID: 25860617). Some research has found that BBS4 expression in humans during the development of CNS and sensory organs, concerning the cardinal clinical signs of BBS (PMID: 33860840).

## Storage

**Storage:**  
Store at -20°C. Avoid exposure to light. Stable for one year after shipment.  
**Storage Buffer:**  
PBS with 50% Glycerol, 0.05% Proclin300, 0.5% BSA, pH 7.3.  
Aliquoting is unnecessary for -20°C storage

For technical support and original validation data for this product please contact:

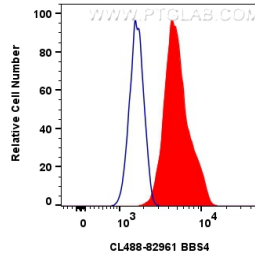
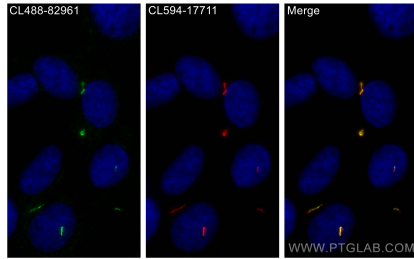
T: 4006900926

E: [Proteintech-CN@ptglab.com](mailto:Proteintech-CN@ptglab.com)

W: [ptgcn.com](http://ptgcn.com)

This product is exclusively available under Proteintech Group brand and is not available to purchase from any other manufacturer.

## Selected Validation Data



Immunofluorescent analysis of (-20°C Methanol) fixed hTERT-RPE1 cells using CoraLite® Plus 488 BBS4 antibody (CL488-82961, Clone: 230303C2 ) at dilution of 1:200, CoraLite®594 ARL13B antibody (CL594-17711, red).

1x10<sup>6</sup> HeLa cells were intracellularly stained with 0.8 ug CoraLite® Plus 488-conjugated BBS4 Recombinant antibody (CL488-82961, Clone:230303C2)(red), or 0.8 ug CoraLite® Plus 488-conjugated Rabbit IgG control Rabbit PolyAb (CL488-30000) (blue). Cells were fixed with 4% PFA and permeabilized with Flow Cytometry Perm Buffer (PF00011-C).