

For Research Use Only

CoraLite® Plus 488-conjugated RAN Recombinant antibody

Catalog Number:CL488-82978



Basic Information

Catalog Number:

CL488-82978

Size:

1000 µg/ml

Source:

Rabbit

Isotype:

IgG

Immunogen Catalog Number:

AG0748

GenBank Accession Number:

BC004272

GeneID (NCBI):

5901

UNIPROT ID:

P62826

Full Name:

RAN, member RAS oncogene family

Calculated MW:

25 kDa

Observed MW:

24 kDa

Purification Method:

Protein A purification

CloneNo.:

230317F3

Recommended Dilutions:

IF/ICC 1:50-1:500

Excitation/Emission maxima
wavelengths:

493 nm / 522 nm

Applications

Tested Applications:

IF/ICC

Species Specificity:

human, mouse, rat

Positive Controls:

IF/ICC : HeLa cells,

Background Information

RAN is also named as ARA24, Ras-like protein TC4 and GTPase Ran, and belongs to the small GTPase superfamily family and the Ran family. GTPase Ran switches between a cytoplasmic GDP- and a nuclear GTP-bound state by nucleotide exchange and GTP hydrolysis (PMID:7819259, PMID:32528950). RAN (GTP-bound form) triggers microtubule assembly at mitotic chromosomes and is required for normal mitotic spindle assembly and chromosome segregation (PMID:10408446, PMID:29040603, PMID:32528950).

Storage

Storage:

Store at -20°C. Avoid exposure to light. Stable for one year after shipment.

Storage Buffer:

PBS with 50% Glycerol, 0.05% Proclin300, 0.5% BSA, pH 7.3.

Aliquoting is unnecessary for -20°C storage

For technical support and original validation data for this product please contact:

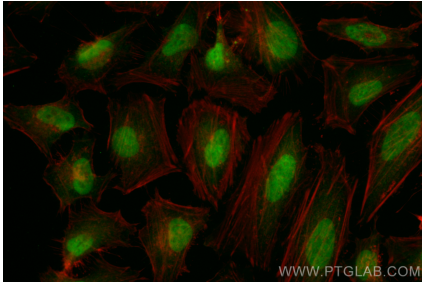
T: 4006900926

E: Proteintech-CN@ptglab.com

W: ptgcn.com

This product is exclusively available under Proteintech Group brand and is not available to purchase from any other manufacturer.

Selected Validation Data



Immunofluorescent analysis of (4% PFA) fixed HeLa cells using Coralite® Plus 488 RAN antibody (CL488-82978, Clone: 230317F3) at dilution of 1:200.