

For Research Use Only

CoraLite® Plus 488-conjugated Integrin beta 3 Recombinant antibody



Catalog Number: **CL488-83053-4**

Basic Information

Catalog Number: CL488-83053-4	GenBank Accession Number: BC127667	Purification Method: Protein A purification
Size: 1000 µg/ml	GeneID (NCBI): 3690	CloneNo.: 230292D5
Source: Rabbit	UNIPROT ID: P05106	Excitation/Emission maxima wavelengths: 493 nm / 522 nm
Isotype: IgG	Full Name: integrin, beta 3 (platelet glycoprotein IIIa, antigen CD61)	
	Calculated MW: 87 kDa	
	Observed MW: 100-110 kDa	

Applications

Tested Applications:
FC (Intra)

Species Specificity:
Human

Background Information

Integrin beta-3, also named as CD61 and GPIIIa, is a receptor for cytotactin, fibronectin, laminin, matrix metalloproteinase-2, osteopontin, osteomodulin, prothrombin, thrombospondin, vitronectin and von Willebrand factor. Integrin beta-3 recognize the sequence R-G-D in a wide array of ligands and the sequence H-H-L-G-G-A-K-Q-A-G-D-V in fibrinogen gamma chain. Following activation integrin beta-3 brings about platelet/platelet interaction through binding of soluble fibrinogen which leads to rapid platelet aggregation which physically plugs ruptured endothelial surface. In case of HIV-1 infection, the interaction with extracellular viral Tat protein seems to enhance angiogenesis in Kaposi's sarcoma lesions. Human integrin beta-3 has a calculated molecular weight of 87 kDa. As a result of glycosylation, the apparent molecular mass of integrin beta-3 is approximately 90-110 kDa.

Storage

Storage:
Store at -20°C. Avoid exposure to light. Stable for one year after shipment.

Storage Buffer:
PBS with 50% Glycerol, 0.05% Proclin300, 0.5% BSA, pH 7.3.

Aliquoting is unnecessary for -20°C storage

For technical support and original validation data for this product please contact:

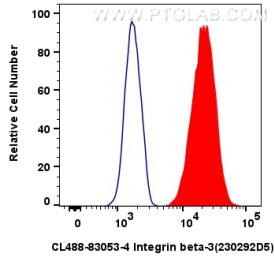
T: 4006900926

E: Proteintech-CN@ptglab.com

W: ptgcn.com

This product is exclusively available under Proteintech Group brand and is not available to purchase from any other manufacturer.

Selected Validation Data



1x10⁶ HUVEC cells were intracellularly stained with 0.8 ug Coralite® Plus 488 Integrin Beta-3 Recombinant Antibody (CL488-83053-4, Clone:230292D5)(red), or 0.8 ug CoraLite® Plus 488-conjugated Rabbit IgG control Rabbit PolyAb (CL488-30000) (blue). Cells were fixed with 4% PFA and permeabilized with Flow Cytometry Perm Buffer (PF00011-C).