

For Research Use Only

# CoraLite® Plus 488-conjugated CA11 Recombinant antibody

Catalog Number:CL488-83082-4



## Basic Information

Catalog Number:

CL488-83082-4

Size:

1000 ug/ml

Source:

Rabbit

Isotype:

IgG

Immunogen Catalog Number:

AG33373

GenBank Accession Number:

BC002662

GeneID (NCBI):

770

UNIPROT ID:

O75493

Full Name:

carbonic anhydrase XI

Calculated MW:

36 kDa

Purification Method:

Protein A purification

CloneNo.:

230390F7

Recommended Dilutions:

IF/ICC 1:50-1:500

Excitation/Emission maxima  
wavelengths:

493 nm / 522 nm

## Applications

Tested Applications:

IF/ICC

Species Specificity:

human

Positive Controls:

IF/ICC : U2OS cells,

## Background Information

CA11(Carbonic anhydrase-related protein 11) is also named CARP2, and CARP XI and belongs to the alpha-carbonic anhydrase family. CARP XI is observed in the cerebellum, cerebrum, liver, stomach, small intestine, colon, kidney, and testis by immunohistochemical, and in the cerebellum, the most prominent signal is located in the Purkinje cells(PMID:20356370). CARP XI contains a hydrophobic N-terminal region for a possible signal sequence and asparagine glycosylation site and it plays a general role in the human central nervous system(PMID: 10350627).

## Storage

Storage:

Store at -20°C. Avoid exposure to light. Stable for one year after shipment.

Storage Buffer:

PBS with 50% Glycerol, 0.05% Proclin300, 0.5% BSA, pH 7.3.

Aliquoting is unnecessary for -20°C storage

For technical support and original validation data for this product please contact:

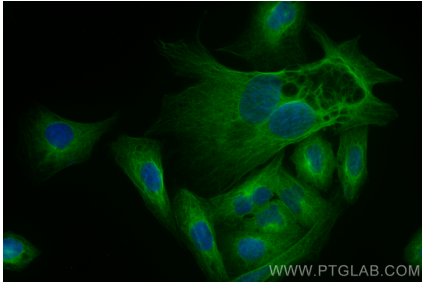
T: 4006900926

E: Proteintech-CN@ptglab.com

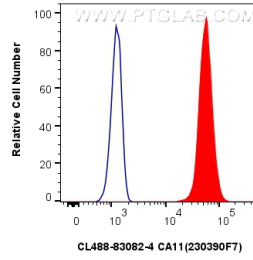
W: ptgcn.com

This product is exclusively available under Proteintech Group brand and is not available to purchase from any other manufacturer.

## Selected Validation Data



Immunofluorescent analysis of (4% PFA) fixed U2OS cells using CoraLite® Plus 488 CA11 antibody (CL488-83082-4, Clone: 230390F7) at dilution of 1:200.



1x10<sup>6</sup> A431 cells were intracellularly stained with 0.4 ug CoraLite® Plus 488-conjugated CA11 Recombinant antibody (CL488-83082-4, Clone:230390F7)(red), or 0.4 ug CoraLite® Plus 488-conjugated Rabbit IgG control Rabbit PolyAb (CL488-30000) (blue). Cells were fixed with 4% PFA and permeabilized with Flow Cytometry Perm Buffer (PF00011-C).