

For Research Use Only

CoraLite® Plus 488-conjugated COPA Recombinant antibody



Catalog Number: CL488-83089-2

Basic Information

Catalog Number:

CL488-83089-2

Size:

1000 µg/ml

Source:

Rabbit

Isotype:

IgG

Immunogen Catalog Number:

AG34207

GenBank Accession Number:

NM_004371

GeneID (NCBI):

1314

UNIPROT ID:

P53621

Full Name:

coatamer protein complex, subunit
alpha

Calculated MW:

138 kDa

Observed MW:

150 kDa

Purification Method:

Protein A purification

CloneNo.:

230361B1

Recommended Dilutions:

IF/ICC 1:50-1:500

Excitation/Emission maxima

wavelengths:

493 nm / 522 nm

Applications

Tested Applications:

IF/ICC

Species Specificity:

Human, mouse

Positive Controls:

IF/ICC : Hela cells,

Background Information

COPA, also named HEP-COP and Alpha-COP, is coatamer subunit alpha. The coatamer is a cytosolic protein complex that binds to dilysine motifs and reversibly associates with Golgi non-clathrin-coated vesicles, which further mediate biosynthetic protein transport from the ER, via the Golgi up to the trans Golgi network. Coatamer complex is required for budding from Golgi membranes, and is essential for the retrograde Golgi-to-ER transport of dilysine-tagged proteins.

Storage

Storage:

Store at -20°C. Avoid exposure to light.

Storage Buffer:

PBS with 50% Glycerol, 0.05% Proclin300, 0.5% BSA, pH 7.3.

Aliquoting is unnecessary for -20°C storage

For technical support and original validation data for this product please contact:

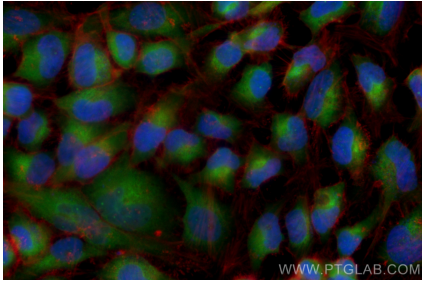
T: 4006900926

E: Proteintech-CN@ptglab.com

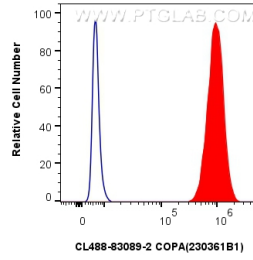
W: ptgcn.com

This product is exclusively available under Proteintech Group brand and is not available to purchase from any other manufacturer.

Selected Validation Data



Immunofluorescent analysis of (4% PFA) fixed HeLa cells using CoraLite® Plus 488 COPA antibody (CL488-83089-2, Clone: 230361B1) at dilution of 1:200.



1x10⁶ HeLa cells were intracellularly stained with 0.8 ug CoraLite® Plus 488-conjugated COPA Recombinant antibody (CL488-83089-2, Clone:230361B1)(red), or 0.8 ug CoraLite® Plus 488-conjugated Rabbit IgG control Rabbit PolyAb (CL488-30000) (blue). Cells were fixed with 4% PFA and permeabilized with Flow Cytometry Perm Buffer (PF00011-C).