

For Research Use Only

CoraLite® Plus 488-conjugated NRF1/nuclear respiratory factor 1 Recombinant antibody

Catalog Number: CL488-83092



Basic Information

Catalog Number:

CL488-83092

Size:

1000 µg/ml

Source:

Rabbit

Isotype:

IgG

Immunogen Catalog Number:

AG3172

GenBank Accession Number:

BC016925

GeneID (NCBI):

4899

UNIPROT ID:

Q16656

Full Name:

nuclear respiratory factor 1

Calculated MW:

522 aa, 56 kDa

Observed MW:

70 kDa

Purification Method:

Protein A purification

CloneNo.:

230394B1

Recommended Dilutions:

IF/ICC 1:50-1:500

Excitation/Emission maxima

wavelengths:

493 nm / 522 nm

Applications

Tested Applications:

IF/ICC

Species Specificity:

human, mouse

Positive Controls:

IF/ICC : HepG2 cells,

Background Information

NRF1, also named as Alpha-pal and NRF-1, belongs to the NRF1/Ewg family. It is a transcription factor that activates the expression of the EIF2S1 (EIF2-alpha) gene. NRF1 is implicated in the control of nuclear genes required for respiration, heme biosynthesis, and mitochondrial DNA transcription and replication. It plays a critical role in regulating the expression of many antioxidant response element (ARE)-dependent genes. NRF1 exists various isoforms and long isoform is about 67 kDa and short isoform is about 45 kDa.

Storage

Storage:

Store at -20°C. Avoid exposure to light. Stable for one year after shipment.

Storage Buffer:

PBS with 50% Glycerol, 0.05% Proclin300, 0.5% BSA, pH 7.3.

Aliquoting is unnecessary for -20°C storage

For technical support and original validation data for this product please contact:

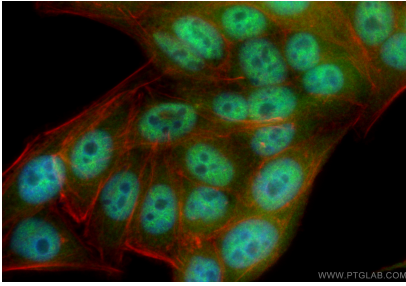
T: 4006900926

E: Proteintech-CN@ptglab.com

W: ptgcn.com

This product is exclusively available under Proteintech Group brand and is not available to purchase from any other manufacturer.

Selected Validation Data



Immunofluorescent analysis of (4% PFA) fixed HepG2 cells using CoraLite® Plus 488 NRF1/nuclear respiratory factor 1 antibody (CL488-83092, Clone: 230394B1) at dilution of 1:200, CL594-Phalloidin (red).