

For Research Use Only

# CoraLite® Plus 488-conjugated CELSR2 Recombinant antibody

Catalog Number:CL488-83115



## Basic Information

Catalog Number:

CL488-83115

Size:

1000 µg/ml

Source:

Rabbit

Isotype:

IgG

GenBank Accession Number:

NM\_001408

GeneID (NCBI):

1952

UNIPROT ID:

Q9HCU4

Full Name:

cadherin, EGF LAG seven-pass G-type  
receptor 2 (flamingo homolog,  
Drosophila)

Calculated MW:

318 kDa

Purification Method:

Protein A purification

CloneNo.:

230319H5

Recommended Dilutions:

IF/ICC 1:50-1:500

Excitation/Emission maxima

wavelengths:

493 nm / 522 nm

## Applications

Tested Applications:

IF/ICC

Species Specificity:

human

Positive Controls:

IF/ICC : SH-SY5Y cells,

## Background Information

CELSR2, also named CDHF10, EGFL2, KIAA0279, and MEGF3, belongs to the G-protein coupled receptor 2 family and LN-TM7 subfamily. It is a receptor that may be important in cell/cell signaling during nervous system formation.

## Storage

Storage:

Store at -20°C. Avoid exposure to light. Stable for one year after shipment.

Storage Buffer:

PBS with 50% Glycerol, 0.05% Proclin300, 0.5% BSA, pH 7.3.

Aliquoting is unnecessary for -20°C storage

For technical support and original validation data for this product please contact:

T: 4006900926

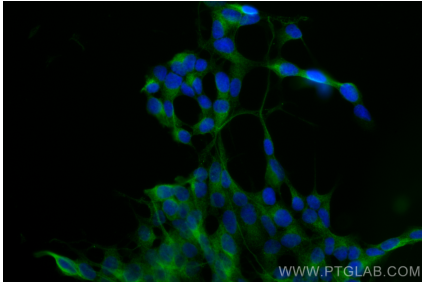
E: [Proteintech-CN@ptglab.com](mailto:Proteintech-CN@ptglab.com)

W: [ptgcn.com](http://ptgcn.com)

This product is exclusively available under Proteintech Group brand and is not available to purchase from any other manufacturer.

---

## Selected Validation Data



Immunofluorescent analysis of (4% PFA) fixed SH-SY5Y cells using CoraLite® Plus 488 CELSR2 antibody (CL488-83115, Clone: 230319H5) at dilution of 1:200.