

For Research Use Only

CoraLite® Plus 488-conjugated HIC2 Recombinant antibody



Catalog Number: CL488-83162-7

Basic Information

Catalog Number: CL488-83162-7	GenBank Accession Number: BC094787	Purification Method: Protein A purification
Size: 1000 µg/ml	GeneID (NCBI): 23119	CloneNo.: 230177E8
Source: Rabbit	UNIPROT ID: Q96JB3	Recommended Dilutions: IF/ICC 1:50-1:500
Isotype: IgG	Full Name: hypermethylated in cancer 2	Excitation/Emission maxima wavelengths: 493 nm / 522 nm
Immunogen Catalog Number: AG18789	Calculated MW: 615 aa, 66 kDa	

Applications

Tested Applications: IF/ICC, FC (Intra)	Positive Controls: IF/ICC : HepG2 cells,
Species Specificity: human	

Background Information

HIC2 (hypermethylated in cancer 2) is a transcription factor related to the tumor suppressor HIC1, required for normal cardiac development and lost in distal variants of 22q11 Deletion Syndrome (PMID: 29061339). HIC2 is also a POK family protein, and the amino acid sequence of its BTB/POZ and zinc-finger domains are similar to those of HIC1 (PMID: 31127867). Studies have shown that HIC2 plays a role in suppressing fetal genes for normal development of the heart and circulatory system, in embryogenesis (PMID: 24748541).

Storage

Storage:
Store at -20°C. Avoid exposure to light.
Storage Buffer:
PBS with 50% Glycerol, 0.05% Proclin300, 0.5% BSA, pH 7.3.
Aliquoting is unnecessary for -20°C storage

For technical support and original validation data for this product please contact:

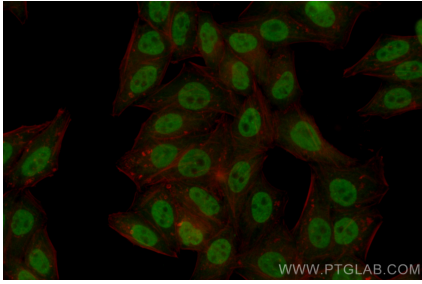
T: 4006900926

E: Proteintech-CN@ptglab.com

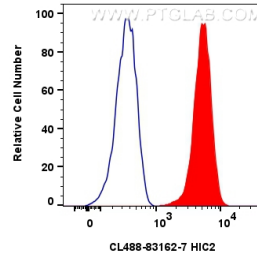
W: ptgcn.com

This product is exclusively available under Proteintech Group brand and is not available to purchase from any other manufacturer.

Selected Validation Data



Immunofluorescent analysis of (4% PFA) fixed HepG2 cells using CoraLite® Plus 488 HIC2 antibody (CL488-83162-7, Clone: 230177E8) at dilution of 1:200.



1x10⁶ HepG2 cells were intracellularly stained with 0.4 ug CoraLite® Plus 488 Hic2 Recombinant Antibody (CL488-83162-7, Clone:230177E8)(red), or 0.4 ug CoraLite® Plus 488-conjugated Rabbit IgG control Rabbit PolyAb (CL488-30000) (blue). Cells were fixed with 4% PFA and permeabilized with Flow Cytometry Perm Buffer (PF00011-C).