

For Research Use Only

# CoraLite® Plus 488-conjugated MMP13 Recombinant antibody

Catalog Number:CL488-83188-2



## Basic Information

Catalog Number:

CL488-83188-2

Size:

1000 µg/ml

Source:

Rabbit

Isotype:

IgG

Immunogen Catalog Number:

AG34892

GenBank Accession Number:

BC074808

GeneID (NCBI):

4322

UNIPROT ID:

P45452

Full Name:

matrix metalloproteinase 13

Calculated MW:

471 aa, 54 kDa

Observed MW:

70 kDa, 54 kDa

Purification Method:

Protein A purification

CloneNo.:

240060B10

Recommended Dilutions:

IF/ICC 1:50-1:500

Excitation/Emission maxima

wavelengths:

493 nm / 522 nm

## Applications

Tested Applications:

IF/ICC

Species Specificity:

human

Positive Controls:

IF/ICC : MCF-7 cells,

## Background Information

MMP-13(Matrix metalloproteinase-13), cleaves type I collagen and was previously thought to be the rodent analogue of human interstitial MMP-1. MMP-13 is found in hypertrophic and calcifying cartilage of mammalian growth plate. The bands seen with rat MMP-13 are consistent with a 59-kDa latent form and a 43-kDa active form reported for this enzyme, along with a smaller band at approximately 30 kDa(PMID:10771523).

## Storage

Storage:

Store at -20°C. Avoid exposure to light. Stable for one year after shipment.

Storage Buffer:

PBS with 50% Glycerol, 0.05% Proclin300, 0.5% BSA, pH 7.3.

Aliquoting is unnecessary for -20°C storage

For technical support and original validation data for this product please contact:

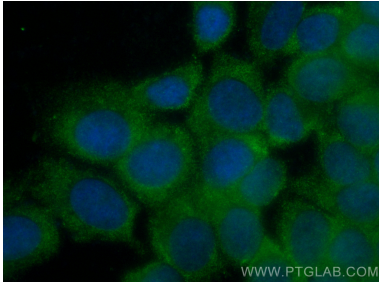
T: 4006900926

E: Proteintech-CN@ptglab.com

W: ptgcn.com

This product is exclusively available under Proteintech Group brand and is not available to purchase from any other manufacturer.

## Selected Validation Data



Immunofluorescent analysis of (-20°C Methanol) fixed MCF-7 cells using CoraLite® Plus 488 MMP13 antibody (CL488-83188-2, Clone: 240060B10 ) at dilution of 1:200.