

For Research Use Only

CoraLite® Plus 488-conjugated SORBS2 Recombinant antibody



Catalog Number:CL488-83189-3

Basic Information

Catalog Number: CL488-83189-3	GenBank Accession Number: BC011883	Purification Method: Protein A purification
Size: 1000 µg/ml	GeneID (NCBI): 8470	CloneNo.: 240023A8
Source: Rabbit	UNIPROT ID: O94875	Recommended Dilutions: IF/ICC 1:50-1:500
Isotype: IgG	Full Name: sorbin and SH3 domain containing 2	Excitation/Emission maxima wavelengths: 493 nm / 522 nm
Immunogen Catalog Number: AG20041	Calculated MW: 1100 aa, 124 kDa	
	Observed MW: 70-75 kDa	

Applications

Tested Applications: IF/ICC	Positive Controls: IF/ICC : U2OS cells,
Species Specificity: human	

Background Information

SORBS2, also known as ARGBP2, has three C-terminal SH3 domains and an N-terminal sorbin homology (SoHo) domain that interacts with lipid raft proteins. SORBS2 is widely expressed in human tissues and extremely abundant in the heart. In epithelial cells SORBS2 is located in stress fibers and the nucleus; In cardiac muscle cells. SORBS2 is located in the Z-disks of sarcomeres. The subcellular localization suggests that SORBS2 functions as an adapter protein to assemble signaling complexes in stress fibers, and may influence the contractile or elastic properties of cardiac sarcomeres(PMID: 9211900). Alternate splicing results in multiple transcript variants(PMID: 28961272).

Storage

Storage:
Store at -20°C. Avoid exposure to light.
Storage Buffer:
PBS with 50% Glycerol, 0.05% Proclin300, 0.5% BSA, pH 7.3.
Aliquoting is unnecessary for -20°C storage

For technical support and original validation data for this product please contact:

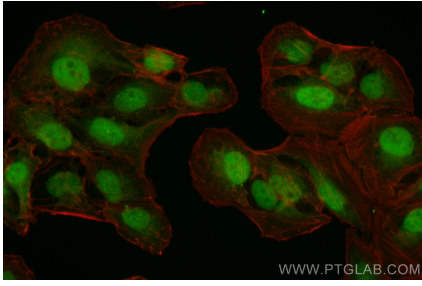
T: 4006900926

E: Proteintech-CN@ptglab.com

W: ptgcn.com

This product is exclusively available under Proteintech Group brand and is not available to purchase from any other manufacturer.

Selected Validation Data



Immunofluorescent analysis of (4% PFA) fixed U2OS cells using CoraLite® Plus 488 SORBS2 antibody (CL488-83189-3, Clone: 240023A8) at dilution of 1:200.