

For Research Use Only

CoraLite® Plus 488-conjugated MLLT1 Recombinant antibody

Catalog Number: CL488-83242-3



Basic Information

Catalog Number:

CL488-83242-3

Size:

1000 µg/ml

Source:

Rabbit

Isotype:

IgG

Immunogen Catalog Number:

AG34210

GenBank Accession Number:

BC148806

GeneID (NCBI):

4298

UNIPROT ID:

Q03111

Full Name:

myeloid/lymphoid or mixed-lineage
leukemia (trithorax homolog,
Drosophila); translocated to, 1

Calculated MW:

62 kDa

Observed MW:

75 kDa

Purification Method:

Protein A purification

CloneNo.:

230519E7

Recommended Dilutions:

IF/ICC 1:50-1:500

Excitation/Emission maxima

wavelengths:

493 nm / 522 nm

Applications

Tested Applications:

IF/ICC

Species Specificity:

human

Positive Controls:

IF/ICC : HeLa cells,

Background Information

Storage

Storage:

Store at -20°C. Avoid exposure to light. Stable for one year after shipment.

Storage Buffer:

PBS with 50% Glycerol, 0.05% Proclin300, 0.5% BSA, pH 7.3.

Aliquoting is unnecessary for -20°C storage

For technical support and original validation data for this product please contact:

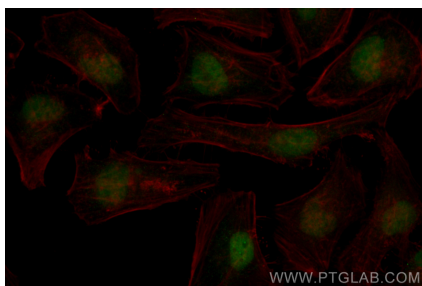
T: 4006900926

E: Proteintech-CN@ptglab.com

W: ptgcn.com

This product is exclusively available under Proteintech Group brand and is not available to purchase from any other manufacturer.

Selected Validation Data



Immunofluorescent analysis of (4% PFA) fixed HeLa cells using Coralite® Plus 488 MLLT1 antibody (CL488-83242-3, Clone: 230519E7) at dilution of 1:200.