

For Research Use Only

# CoraLite® Plus 488-conjugated NRG1, isoform Alpha Recombinant antibody

Catalog Number: CL488-83251-2



## Basic Information

Catalog Number:

CL488-83251-2

Size:

1000 ug/ml

Source:

Rabbit

Isotype:

IgG

Immunogen Catalog Number:

AG35114

GenBank Accession Number:

BC007675

GeneID (NCBI):

3084

UNIPROT ID:

Q02297

Full Name:

neuregulin 1

Calculated MW:

70 kDa

Observed MW:

70 kDa

Purification Method:

Protein A purification

CloneNo.:

240067A6

Recommended Dilutions:

IF/ICC 1:50-1:500

Excitation/Emission maxima wavelengths:

493 nm / 522 nm

## Applications

Tested Applications:

IF/ICC

Species Specificity:

human

Positive Controls:

IF/ICC : MCF-7 cells,

## Background Information

Neuregulin 1 (NRG1) is a trophic factor that has been implicated in neural development, neurotransmission, and synaptic plasticity. NRG1 has multiple isoforms that are generated by usage of different promoters and alternative splicing of a single gene. NRG1 and its receptor ErbB tyrosine kinase are expressed not only in the developing nervous system, but also in the adult brain. The immunogen of this antibody is against NRG1 isoform Alpha.

## Storage

Storage:

Store at -20°C. Avoid exposure to light. Stable for one year after shipment.

Storage Buffer:

PBS with 50% Glycerol, 0.05% Proclin300, 0.5% BSA, pH 7.3.

Aliquoting is unnecessary for -20°C storage

For technical support and original validation data for this product please contact:

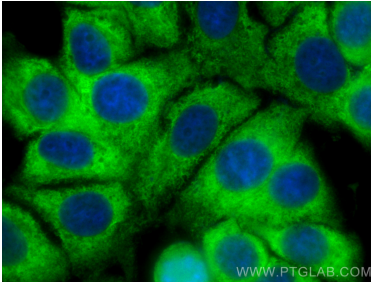
T: 4006900926

E: [Proteintech-CN@ptglab.com](mailto:Proteintech-CN@ptglab.com)

W: [ptgcn.com](http://ptgcn.com)

This product is exclusively available under Proteintech Group brand and is not available to purchase from any other manufacturer.

## Selected Validation Data



Immunofluorescent analysis of (-20°C Methanol) fixed MCF-7 cells using CoraLite® Plus 488 NRG1, isoform Alpha antibody (CL488-83251-2, Clone: 240067A6) at dilution of 1:200.