

For Research Use Only

CoraLite® Plus 488-conjugated CBX5 Recombinant antibody

Catalog Number: CL488-83258-6



Basic Information

Catalog Number:

CL488-83258-6

Concentration:

1000 µg/ml

Source:

Rabbit

Isotype:

IgG

Immunogen Catalog Number:

AG34810

GenBank Accession Number:

BC006821

GeneID (NCBI):

23468

UNIPROT ID:

P45973

Full Name:

chromobox homolog 5 (HP1 alpha homolog, Drosophila)

Calculated MW:

191 aa, 22 kDa

Purification Method:

Protein A purification

CloneNo.:

240145G12

Recommended Dilutions:

IF/ICC 1:50-1:500

Excitation/Emission maxima wavelengths:

493 nm / 522 nm

Applications

Tested Applications:

IF/ICC

Species Specificity:

human

Positive Controls:

IF/ICC : HepG2 cells,

Background Information

Storage

Storage:

Store at -20°C. Avoid exposure to light. Stable for one year after shipment.

Storage Buffer:

PBS with 50% Glycerol, 0.05% Proclin300, 0.5% BSA, pH 7.3.

Aliquoting is unnecessary for -20°C storage

For technical support and original validation data for this product please contact:

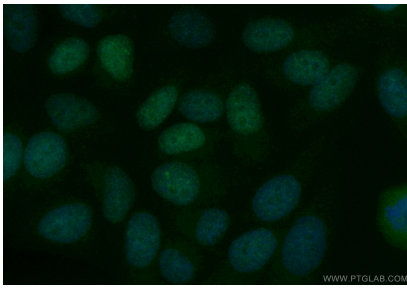
T: 4006900926

E: Proteintech-CN@ptglab.com

W: ptgcn.com

This product is exclusively available under Proteintech Group brand and is not available to purchase from any other manufacturer.

Selected Validation Data



Immunofluorescent analysis of (4% PFA) fixed HepG2 cells using CoraLite® Plus 488 CBX5 antibody (CL488-83258-6, Clone: 240145G12) at dilution of 1:200.