

For Research Use Only

CoraLite® Plus 488-conjugated KERA Recombinant monoclonal antibody

Catalog Number: CL488-83272



Basic Information

Catalog Number:

CL488-83272

Source:

Rabbit

Isotype:

IgG

Immunogen Catalog Number:

AG34171

GenBank Accession Number:

BC032667

GeneID (NCBI):

11081

UNIPROT ID:

O60938

Full Name:

keratocan

Calculated MW:

352 aa, 41 kDa

Purification Method:

Protein A purification

CloneNo.:

230399B11

Recommended Dilutions:

IF-P: 1:50-1:500

FC (Intra): 0.80 ug per 10⁶ cells in a 100 µl suspension

Excitation/Emission maxima wavelengths:

493 nm / 522 nm

Applications

Tested Applications:

IF-P, FC (Intra)

Species Specificity:

human, rat

Positive Controls:

IF-P : rat eye tissue,

FC (Intra) : MCF-7 cells,

Background Information

Keratocan and Lumican are the predominant class II SLRPs (Small leucine-rich proteoglycans) in the corneal stroma. While not totally corneal-specific together these SLRPs are excellent biomarkers for the tissue. Mutant mice deficient for keratocan expression have transparent but thin corneal stromas with a mild increase in collagen fibril diameter with no further abnormalities. In humans, mutations in the keratocan gene are associated with a flattened cornea in a rare condition known as cornea plana. The relative specificity of keratocan to corneal keratocytes has been useful for tissue-specific targeting for genetic manipulation of the corneal stroma. (PMID: 32663498)

Storage

Storage:

Store at -20°C. Avoid exposure to light. Stable for one year after shipment.

Storage Buffer:

PBS with 50% glycerol, 0.05% Proclin300, 0.5% BSA, pH7.3

Aliquoting is unnecessary for -20°C storage

For technical support and original validation data for this product please contact:

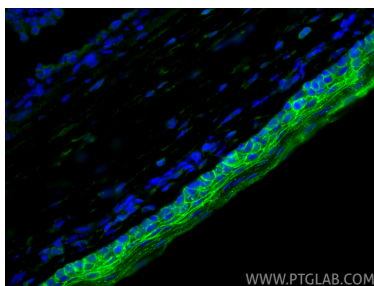
T: 4006900926

E: Proteintech-CN@ptglab.com

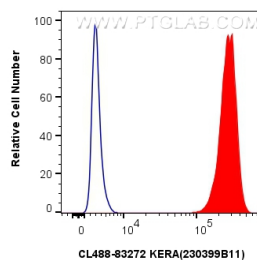
W: ptgcn.com

This product is exclusively available under Proteintech Group brand and is not available to purchase from any other manufacturer.

Selected Validation Data



Immunofluorescent analysis of (4% PFA) fixed paraffin-embedded rat eye tissue using CoraLite® Plus 488 KERA antibody (CL488-83272, Clone: 230399B11) at dilution of 1:200. Heat mediated antigen retrieval with Tris-EDTA buffer (pH 9.0).



1×10^6 MCF-7 cells were intracellularly stained with 0.8 μ g CoraLite® Plus 488 KERA Recombinant Antibody (CL488-83272, Clone: 230399B11)(red), or 0.8 μ g CoraLite® Plus 488-conjugated Rabbit IgG control Rabbit PolyAb (CL488-30000) (blue). Cells were fixed with 4% PFA and permeabilized with Flow Cytometry Perm Buffer.