

For Research Use Only

# CoraLite® Plus 488-conjugated RPS18 Recombinant antibody



Catalog Number: **CL488-83327**

## Basic Information

Catalog Number:

CL488-83327

Size:

1000 µg/ml

Source:

Rabbit

Isotype:

IgG

Immunogen Catalog Number:

AG12505

GenBank Accession Number:

BC106063

GeneID (NCBI):

6222

UNIPROT ID:

P62269

Full Name:

ribosomal protein S18

Calculated MW:

152 aa, 18 kDa

Purification Method:

Protein A purification

CloneNo.:

240004C10

Recommended Dilutions:

IF/ICC 1:50-1:500

Excitation/Emission maxima

wavelengths:

493 nm / 522 nm

## Applications

Tested Applications:

IF/ICC, FC (Intra)

Species Specificity:

human

Positive Controls:

IF/ICC : HepG2 cells,

## Background Information

### Storage

Storage:

Store at -20°C. Avoid exposure to light.

Storage Buffer:

PBS with 50% Glycerol, 0.05% Proclin300, 0.5% BSA, pH 7.3.

Aliquoting is unnecessary for -20°C storage

For technical support and original validation data for this product please contact:

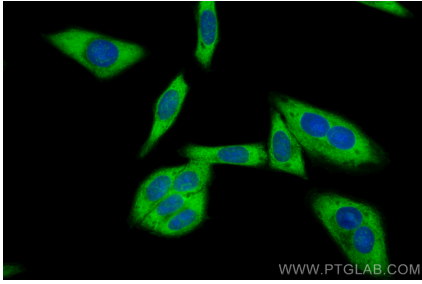
T: 4006900926

E: [Proteintech-CN@ptglab.com](mailto:Proteintech-CN@ptglab.com)

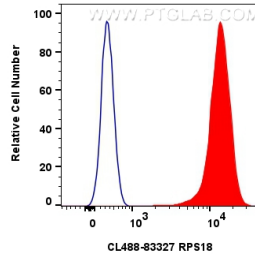
W: [ptgcn.com](http://ptgcn.com)

**This product is exclusively available under Proteintech Group brand and is not available to purchase from any other manufacturer.**

## Selected Validation Data



Immunofluorescent analysis of (-20°C Ethanol) fixed HepG2 cells using CoraLite® Plus 488 RPS18 antibody (CL488-83327, Clone: 240004C10) at dilution of 1:200.



1x10<sup>6</sup> HepG2 cells were intracellularly stained with 0.4 ug CoraLite® Plus 488 Rps18 Recombinant Antibody (CL488-83327, Clone:240004C10)(red), or 0.4 ug CoraLite® Plus 488-conjugated Rabbit IgG control Rabbit PolyAb (CL488-30000) (blue). Cells were fixed with 4% PFA and permeabilized with Flow Cytometry Perm Buffer (PF00011-C).