

For Research Use Only

CoraLite® Plus 488-conjugated NCAM1/CD56 Recombinant antibody

Catalog Number:CL488-83365-6



Basic Information

Catalog Number:
CL488-83365-6

Size:
1000 µg/ml

Source:
Rabbit

Isotype:
IgG

GenBank Accession Number:
BC047244

GeneID (NCBI):
4684

ENSEMBL Gene ID:
ENSG00000149294

UNIPROT ID:
P13591

Full Name:
neural cell adhesion molecule 1

Calculated MW:
95 kDa

Observed MW:
160 kDa

Purification Method:
Protein A purification

CloneNo.:
240078C9

Recommended Dilutions:
IF/ICC 1:50-1:200

Excitation/Emission maxima
wavelengths:
493 nm / 522 nm

Applications

Tested Applications:
IF/ICC

Species Specificity:
human

Positive Controls:

IF/ICC : SH-SY5Y cells,

Background Information

Neural cell adhesion molecule 1 (NCAM1, also known as CD56) is a cell adhesion glycoprotein of the immunoglobulin (Ig) superfamily. It is a multifunction protein involved in synaptic plasticity, neurodevelopment, and neurogenesis. NCAM1 is expressed on human neurons, glial cells, skeletal muscle cells, NK cells and a subset of T cells, and the expression is observed in a wide variety of human tumors, including myeloma, myeloid leukemia, neuroendocrine tumors, Wilms' tumor, neuroblastoma, and NK/T cell lymphomas. Three major isoforms of NCAM1, with molecular masses of 120, 140, and 180 kDa, are generated by alternative splicing of mRNA (PMID: 9696812). The glycosylphosphatidylinositol (GPI)-anchored NCAM120 and the transmembrane NCAM140 and NCAM180 consist of five Ig-like domains and two fibronectin-type III repeats (FNIII). All three forms can be posttranslationally modified by addition of polysialic acid (PSA) (PMID: 14976519). Several other isoforms have also been described (PMID: 1856291).

Storage

Storage:

Store at -20°C. Avoid exposure to light. Stable for one year after shipment.

Storage Buffer:

PBS with 50% Glycerol, 0.05% Proclin300, 0.5% BSA, pH 7.3.

Aliquoting is unnecessary for -20°C storage

For technical support and original validation data for this product please contact:

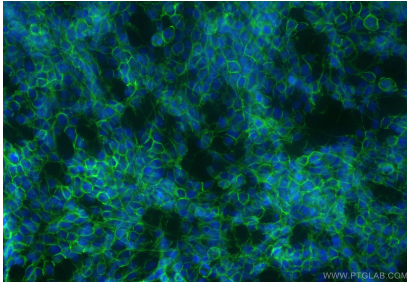
T: 4006900926

E: Proteintech-CN@ptglab.com

W: ptgcn.com

This product is exclusively available under Proteintech Group brand and is not available to purchase from any other manufacturer.

Selected Validation Data



Immunofluorescent analysis of (-20°C Ethanol) fixed SH-SY5Y cells using CoraLite® Plus 488 NCAM1/CD56 antibody (CL488-83365-6, Clone: 240078C9) at dilution of 1:200.