

For Research Use Only

CoraLite® Plus 488-conjugated RPL29 Recombinant antibody



Catalog Number:CL488-83377

Basic Information

Catalog Number: CL488-83377	GenBank Accession Number: BC008926	Purification Method: Protein A purification
Size: 1000 µg/ml	GeneID (NCBI): 6159	CloneNo.: 240062F9
Source: Rabbit	UNIPROT ID: P47914	Recommended Dilutions: IF/ICC 1:50-1:500
Isotype: IgG	Full Name: ribosomal protein L29	Excitation/Emission maxima wavelengths: 493 nm / 522 nm
Immunogen Catalog Number: AG34100	Calculated MW: 159 aa, 18 kDa	
	Observed MW: 20-25 kDa	

Applications

Tested Applications: IF/ICC	Positive Controls: IF/ICC : HepG2 cells,
Species Specificity: human, mouse, rat	

Background Information

Ribosomal protein L29 (Rpl29) is a component of the large (60S) ribosomal subunit which is abundantly expressed in all cell types, plays a regulatory role in translation efficiency and is essential for protein synthesis (PMID: 17195189). In contrast to adult tissues, RPL29 displays a much more widespread pattern of expression throughout embryonic development, and high levels of RPL29 are found in all developing organs. Several reports showed that RPL29 expression is up-regulated in human carcinomas and constitutes a candidate marker for abnormal growth when overexpressed (PMID: 9788632, 10383165).

Storage

Storage:
Store at -20°C. Avoid exposure to light.
Storage Buffer:
PBS with 50% Glycerol, 0.05% Proclin300, 0.5% BSA, pH 7.3.
Aliquoting is unnecessary for -20°C storage

For technical support and original validation data for this product please contact:

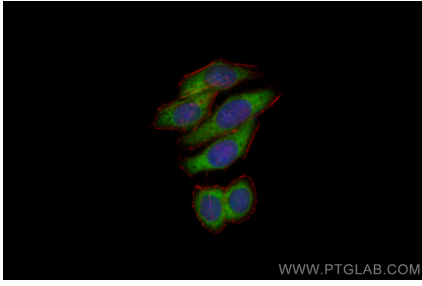
T: 4006900926

E: Proteintech-CN@ptglab.com

W: ptgcn.com

This product is exclusively available under Proteintech Group brand and is not available to purchase from any other manufacturer.

Selected Validation Data



Immunofluorescent analysis of (-20°C Ethanol) fixed HepG2 cells using CoraLite® Plus 488 RPL29 antibody (CL488-83377, Clone: 240062F9) at dilution of 1:200.