

For Research Use Only



CoraLite® Plus 488-conjugated Nucleolin/C23 Recombinant antibody

Catalog Number: **CL488-83380**

Basic Information

Catalog Number: CL488-83380	GenBank Accession Number: BC006494	Purification Method: Protein A purification
Size: 1000 µg/ml	GeneID (NCBI): 4691	CloneNo.: 240029F8
Source: Rabbit	UNIPROT ID: P19338	Recommended Dilutions: IF/ICC 1:50-1:500
Isotype: IgG	Full Name: nucleolin	Excitation/Emission maxima wavelengths: 493 nm / 522 nm
Immunogen Catalog Number: AG0859	Calculated MW: 76 kDa	
	Observed MW: 100-110 kDa	

Applications

Tested Applications: IF/ICC	Positive Controls: IF/ICC : HeLa cells,
Species Specificity: human	

Background Information

Nucleolin, also known as C23, involved in the control of transcription of ribosomal RNA (rRNA) genes by RNA polymerase I, in nucleocytoplasmic transportation of ribosomal components, and in ribosome maturation and assembly. It associated with intranucleolar chromatin and pre-ribosomal particles, and induced chromatin decondensation by binding to histone H1. Also it has a role in the process of transcriptional elongation. Whilst mammalian nucleolin has a predicted molecular mass of approximately 77 kDa, the apparent molecular mass is between 100 and 110 kDa, and has been attributed to the amino acid composition of the N-terminal domain, which is highly phosphorylated. (PMID: 15925566)

Storage

Storage:
Store at -20°C. Avoid exposure to light.
Storage Buffer:
PBS with 50% Glycerol, 0.05% Proclin300, 0.5% BSA, pH 7.3.
Aliquoting is unnecessary for -20°C storage

For technical support and original validation data for this product please contact:

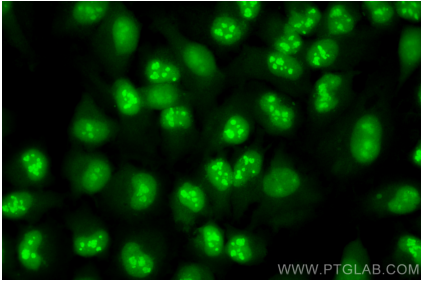
T: 4006900926

E: Proteintech-CN@ptglab.com

W: ptgcn.com

This product is exclusively available under Proteintech Group brand and is not available to purchase from any other manufacturer.

Selected Validation Data



Immunofluorescent analysis of (4% PFA) fixed HeLa cells using CoraLite® Plus 488 Nucleolin/C23 antibody (CL488-83380, Clone: 240029F8) at dilution of 1:200.