

For Research Use Only

CoraLite® Plus 488-conjugated PTDSS1 Recombinant antibody

Catalog Number: CL488-83421



Basic Information

Catalog Number:

CL488-83421

Concentration:

1000 µg/ml

Source:

Rabbit

Isotype:

IgG

Immunogen Catalog Number:

AG14170

GenBank Accession Number:

BC002376

GeneID (NCBI):

9791

UNIPROT ID:

P48651

Full Name:

phosphatidylserine synthase 1

Calculated MW:

473 aa, 56 kDa

Purification Method:

Protein A purification

CloneNo.:

240007G3

Recommended Dilutions:

IF/ICC 1:50-1:500

Excitation/Emission maxima

wavelengths:

493 nm / 522 nm

Applications

Tested Applications:

IF/ICC

Species Specificity:

human

Positive Controls:

IF/ICC : HepG2 cells,

Background Information

Phosphatidylserine Synthase-1 (PTDSS1 or PSS1) is one of two enzymes involved in the production of phosphatidylserine (PS), which is a quantitatively minor, but physiologically important phospholipid in mammalian cells (PMID: 24241535). Mice lacking either Ptdss1 or Ptdss2 are viable, phenotypically normal and fertile, indicating that, in mice, PSS1 and PSS2 can compensate for each other (PMID: 18343815).

Storage

Storage:

Store at -20°C. Avoid exposure to light. Stable for one year after shipment.

Storage Buffer:

PBS with 50% Glycerol, 0.05% Proclin300, 0.5% BSA, pH 7.3.

Aliquoting is unnecessary for -20°C storage

For technical support and original validation data for this product please contact:

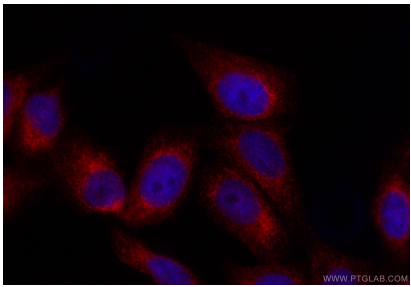
T: 4006900926

E: Proteintech-CN@ptglab.com

W: ptgcn.com

This product is exclusively available under Proteintech Group brand and is not available to purchase from any other manufacturer.

Selected Validation Data



N/A