

For Research Use Only

# CoraLite® Plus 488-conjugated ESR2 Recombinant antibody



Catalog Number: **CL488-83447-3**

## Basic Information

|  |  |   |
|--|--|---|
| <b>Catalog Number:</b><br>CL488-83447-3    | <b>GenBank Accession Number:</b><br>BC024181       | <b>Purification Method:</b><br>Protein A purification                 |
| <b>Size:</b><br>1000 µg/ml                 | <b>GeneID (NCBI):</b><br>2100                      | <b>CloneNo.:</b><br>240412F2  |
| <b>Source:</b><br>Rabbit                   | <b>UNIPROT ID:</b><br>Q92731                       | <b>Recommended Dilutions:</b><br>IF/ICC 1:50-1:500                    |
| <b>Isotype:</b><br>IgG                     | <b>Full Name:</b><br>estrogen receptor 2 (ER beta) | <b>Excitation/Emission maxima<br/>wavelengths:</b><br>493 nm / 522 nm |
| <b>Immunogen Catalog Number:</b><br>AG5103 | <b>Calculated MW:</b><br>59 kDa                    |   |

## Applications

|                                       |  |
|---------------------------------------|--|
| <b>Tested Applications:</b><br>IF/ICC | <b>Positive Controls:</b><br>IF/ICC : HepG2 cells, |
| <b>Species Specificity:</b><br>human  |  |

## Background Information

Estrogen receptor-beta (ESR2) is a member of the superfamily of nuclear receptors, which can transduce extracellular signals into transcriptional responses. It binds estrogens with an affinity similar to that of ESR1, and activates expression of reporter genes containing estrogen response elements (ERE) in an estrogen-dependent manner. DNA-binding by ESR1 and ESR2 is rapidly lost at 37 degrees Celsius in the absence of ligand while in the presence of 17 beta-estradiol and 4-hydroxy-tamoxifen loss in DNA-binding at elevated temperature is more gradual.

## Storage

**Storage:**  
Store at -20°C. Avoid exposure to light.  
**Storage Buffer:**  
PBS with 50% Glycerol, 0.05% Proclin300, 0.5% BSA, pH 7.3.  
Aliquoting is unnecessary for -20°C storage

For technical support and original validation data for this product please contact:

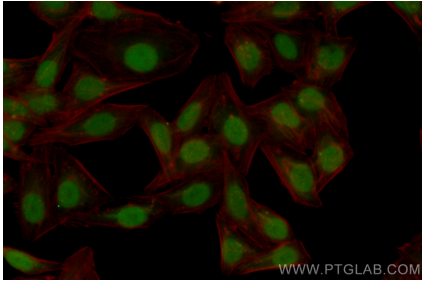
T: 4006900926

E: [Proteintech-CN@ptglab.com](mailto:Proteintech-CN@ptglab.com)

W: [ptgcn.com](http://ptgcn.com)

**This product is exclusively available under Proteintech Group brand and is not available to purchase from any other manufacturer.**

## Selected Validation Data



Immunofluorescent analysis of (4% PFA) fixed HepG2 cells using CoraLite® Plus 488 ESR2 antibody (CL488-83447-3, Clone: 240412F2) at dilution of 1:200.