

For Research Use Only

CoraLite® Plus 488-conjugated HTRA2 Recombinant antibody

Catalog Number:CL488-83492-7



Basic Information

Catalog Number:

CL488-83492-7

Size:

1000 µg/ml

Source:

Rabbit

Isotype:

IgG

Immunogen Catalog Number:

AG8455

GenBank Accession Number:

BC000096

GeneID (NCBI):

27429

UNIPROT ID:

O43464

Full Name:

HtrA serine peptidase 2

Calculated MW:

49 kDa

Observed MW:

36 kDa

Purification Method:

Protein A purification

CloneNo.:

240496D1

Recommended Dilutions:

IF/ICC 1:50-1:500

**Excitation/Emission maxima
wavelengths:**

493 nm / 522 nm

Applications

Tested Applications:

IF/ICC

Species Specificity:

human

Positive Controls:

IF/ICC : HepG2 cells,

Background Information

HTRA2(High temperature requirement protein A2) is also named as OMI, PRSS25 and belongs to the peptidase S1B family. HTRA2 normally exists in the mitochondria, can cause MMP3 activation in the cytosol under a cell stress condition, which can ultimately lead to demise of dopaminergic neuronal cells(PMID: 22265821). It inhibits mitochondrial superoxide generation, stabilizes mitochondrial membrane potential, and prevents apoptosis at baseline and in response to extracellular inducers of mitochondrial stress(PMID: 18772386). This protein has 4 isoforms produced by alternative splicing.

Storage

Storage:

Store at -20°C. Avoid exposure to light. Stable for one year after shipment.

Storage Buffer:

PBS with 50% Glycerol, 0.05% Proclin300, 0.5% BSA, pH 7.3.

Aliquoting is unnecessary for -20°C storage

For technical support and original validation data for this product please contact:

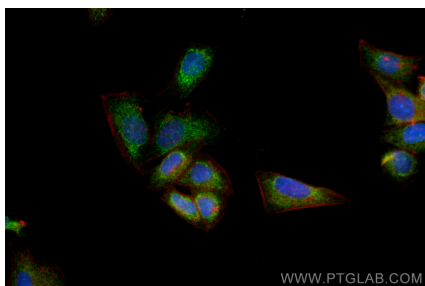
T: 4006900926

E: Proteintech-CN@ptglab.com

W: ptgcn.com

This product is exclusively available under Proteintech Group brand and is not available to purchase from any other manufacturer.

Selected Validation Data



Immunofluorescent analysis of (4% PFA) fixed HepG2 cells using CoraLite® Plus 488 HTRA2 antibody (CL488-83492-7, Clone: 240496D1) at dilution of 1:200.