

For Research Use Only

CoraLite® Plus 488-conjugated RPS11 Recombinant antibody



Catalog Number: CL488-83517-3

Basic Information

Catalog Number:

CL488-83517-3

Size:

1000 µg/ml

Source:

Rabbit

Isotype:

IgG

Immunogen Catalog Number:

AG34848

GenBank Accession Number:

BC007945

GeneID (NCBI):

6205

UNIPROT ID:

P62280

Full Name:

ribosomal protein S11

Calculated MW:

158 aa, 18 kDa

Observed MW:

18 kDa

Purification Method:

Protein A purification

CloneNo.:

240327D11

Recommended Dilutions:

IF/ICC 1:50-1:500

Excitation/Emission maxima

wavelengths:

493 nm / 522 nm

Applications

Tested Applications:

IF/ICC

Species Specificity:

human, mouse, rat

Positive Controls:

IF/ICC : MCF-7 cells,

Background Information

RPS11 is a ribosomal protein involved in ribosome biogenesis. It is a component of the small ribosomal subunit. The ribosome is a large ribonucleoprotein complex responsible for the synthesis of proteins in the cell.

Storage

Storage:

Store at -20°C. Avoid exposure to light.

Storage Buffer:

PBS with 50% Glycerol, 0.05% Proclin300, 0.5% BSA, pH 7.3.

Aliquoting is unnecessary for -20°C storage

For technical support and original validation data for this product please contact:

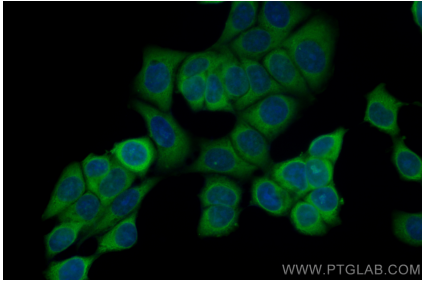
T: 4006900926

E: Proteintech-CN@ptglab.com

W: ptgcn.com

This product is exclusively available under Proteintech Group brand and is not available to purchase from any other manufacturer.

Selected Validation Data



Immunofluorescent analysis of (-20°C Ethanol) fixed MCF-7 cells using CoraLite® Plus 488 RPS11 antibody (CL488-83517-3, Clone: 240327D11) at dilution of 1:200.