

For Research Use Only

# CoraLite® Plus 488-conjugated SOD2 Recombinant antibody

Catalog Number:CL488-83519-2



## Basic Information

Catalog Number:

CL488-83519-2

Size:

1000 ug/ml

Source:

Rabbit

Isotype:

IgG

Immunogen Catalog Number:

AG21388

GenBank Accession Number:

BC016934

GeneID (NCBI):

6648

UNIPROT ID:

P04179

Full Name:

superoxide dismutase 2,  
mitochondrial

Calculated MW:

25 kDa

Purification Method:

Protein A purification

CloneNo.:

240462F8

Recommended Dilutions:

IF/ICC 1:50-1:500

Excitation/Emission maxima  
wavelengths:

493 nm / 522 nm

## Applications

Tested Applications:

IF/ICC

Species Specificity:

human

Positive Controls:

IF/ICC : HeLa cells,

## Background Information

SOD2(superoxide dismutase 2, mitochondrial ) is also named as IPOB, MNSOD, SODM, Mn-SOD and belongs to the iron/manganese superoxide dismutase family. It is a marker of mitochondria, which is restricted to the perinuclear area in a cell with aggregate formation of mutant SOD1(PMID:12659845). It functions as the first line of antioxidant defense against highly reactive superoxide radicals and it appears to be early predictors for survival in septic patients with with MIF(PMID:20863520). It has 2 isoforms with the molecular weight of 25 kDa and 21 kDa. This antibody is specific to SOD2.

## Storage

Storage:

Store at -20°C. Avoid exposure to light. Stable for one year after shipment.

Storage Buffer:

PBS with 50% Glycerol, 0.05% Proclin300, 0.5% BSA, pH 7.3.

Aliquoting is unnecessary for -20°C storage

For technical support and original validation data for this product please contact:

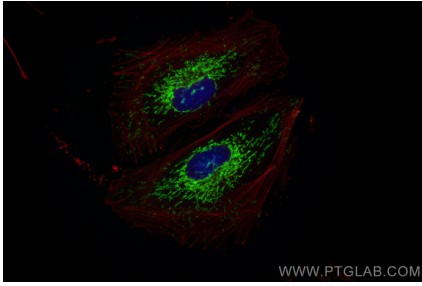
T: 4006900926

E: Proteintech-CN@ptglab.com

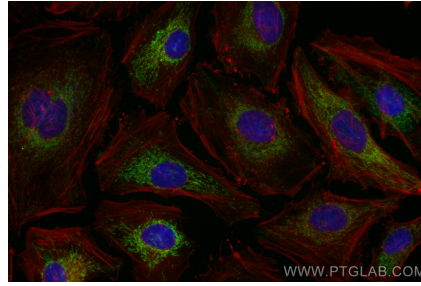
W: ptgcn.com

This product is exclusively available under Proteintech Group brand and is not available to purchase from any other manufacturer.

## Selected Validation Data



Immunofluorescent analysis of (4% PFA) fixed HeLa cells using CoraLite® Plus 488 SOD2 antibody (CL488-83519-2, Clone: 240462F8 ) at dilution of 1:200.



Immunofluorescent analysis of (4% PFA) fixed HeLa cells using CoraLite® Plus 488 SOD2 antibody (CL488-83519-2, Clone: 240462F8 ) at dilution of 1:200.