

For Research Use Only

CoraLite® Plus 488-conjugated MYO1G Recombinant antibody

Catalog Number: CL488-83556-5



Basic Information

Catalog Number:

CL488-83556-5

Size:

1000 µg/ml

Source:

Rabbit

Isotype:

IgG

Immunogen Catalog Number:

AG22698

GenBank Accession Number:

BC113544

GeneID (NCBI):

64005

UNIPROT ID:

B0I1T2

Full Name:

myosin IG

Calculated MW:

1018 aa, 116 kDa

Observed MW:

110-120 kDa

Purification Method:

Protein A purification

CloneNo.:

240503E1

Recommended Dilutions:

IF/ICC 1:50-1:500

Excitation/Emission maxima

wavelengths:

493 nm / 522 nm

Applications

Tested Applications:

IF/ICC

Species Specificity:

human

Positive Controls:

IF/ICC : Jurkat cells,

Background Information

MYO1G is a plasma membrane-associated class I myosin that is abundant in T and B lymphocytes and mast cells and expressed specifically in the haematopoietic system. Class I myosins have been implicated in various cellular processes relying on actin-dependent membrane dynamics such as endocytosis, secretion, adhesion, motility and regulation of mechanosensitive channels (PMID: 19968988). MYO1G localizes to the plasma membrane linked to PIP2 and PIP3, is particularly enriched at cell-surface microvilli, and associates in an ATP-releasable manner to the actin cytoskeleton (PMID: 24310084). MYO1G can be detected as about 110-120 kDa.

Storage

Storage:

Store at -20°C. Avoid exposure to light. Stable for one year after shipment.

Storage Buffer:

PBS with 50% Glycerol, 0.05% Proclin300, 0.5% BSA, pH 7.3.

Aliquoting is unnecessary for -20°C storage

For technical support and original validation data for this product please contact:

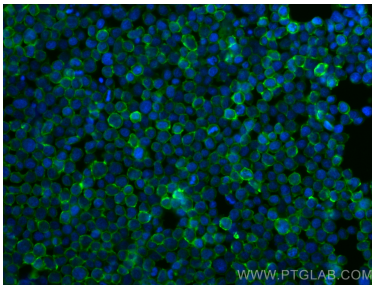
T: 4006900926

E: Proteintech-CN@ptglab.com

W: ptgcn.com

This product is exclusively available under Proteintech Group brand and is not available to purchase from any other manufacturer.

Selected Validation Data



Immunofluorescent analysis of (4% PFA) fixed Jurkat cells using CoraLite® Plus 488 MYO1G antibody (CL488-83556-5, Clone: 240503E1) at dilution of 1:200.