

For Research Use Only

CoraLite® Plus 488-conjugated ANAPC10 Recombinant antibody

Catalog Number:CL488-83570-4



Basic Information

Catalog Number:

CL488-83570-4

Size:

1000 µg/ml

Source:

Rabbit

Isotype:

IgG

Immunogen Catalog Number:

AG8487

GenBank Accession Number:

BC005217

GeneID (NCBI):

10393

UNIPROT ID:

Q9UM13

Full Name:

anaphase promoting complex subunit 10

10

Calculated MW:

185 aa, 21 kDa

Purification Method:

Protein A purification

CloneNo.:

240492E7

Recommended Dilutions:

IF/ICC 1:50-1:500

Excitation/Emission maxima

wavelengths:

493 nm / 522 nm

Applications

Tested Applications:

IF/ICC

Species Specificity:

human

Positive Controls:

IF/ICC : HeLa cells,

Background Information

The anaphase promoting complex/cyclosome (APC/C) is a cell cycle-regulated multimeric E3 ubiquitin ligase assembled from 13 individual subunits. The anaphase promoting complex subunit 10 (APC10) is a core subunit of APC/C that is highly conserved in humans. APC10 genetically and physically interacts with a series of subunits of the APC/C and is necessary for the ubiquitination activity of APC/C by enhancing the affinity of the APC/C for its substrate.

Storage

Storage:

Store at -20°C. Avoid exposure to light. Stable for one year after shipment.

Storage Buffer:

PBS with 50% Glycerol, 0.05% Proclin300, 0.5% BSA, pH 7.3.

Aliquoting is unnecessary for -20°C storage

For technical support and original validation data for this product please contact:

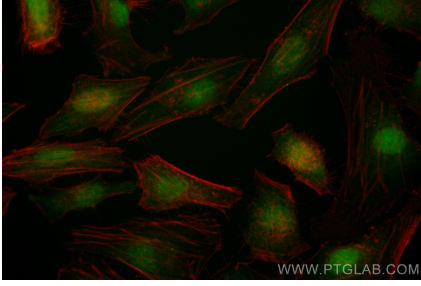
T: 4006900926

E: Proteintech-CN@ptglab.com

W: ptgcn.com

This product is exclusively available under Proteintech Group brand and is not available to purchase from any other manufacturer.

Selected Validation Data



Immunofluorescent analysis of (4% PFA) fixed HeLa cells using CoraLite® Plus 488 ANAPC10 antibody (CL488-83570-4, Clone: 240492E7) at dilution of 1:200.