

For Research Use Only

# CoraLite® Plus 488-conjugated KDM3A, JMJD1A Recombinant antibody

Catalog Number: CL488-83571-6



## Basic Information

<b>Catalog Number:</b> CL488-83571-6	<b>GenBank Accession Number:</b> BC038297	<b>Purification Method:</b> Protein A purification
<b>Size:</b> 1000 µg/ml	<b>GeneID (NCBI):</b> 55818	<b>CloneNo.:</b> 240532E2
<b>Source:</b> Rabbit	<b>UNIPROT ID:</b> Q9Y4C1	<b>Recommended Dilutions:</b> IF/ICC 1:50-1:500
<b>Isotype:</b> IgG	<b>Full Name:</b> lysine (K)-specific demethylase 3A	<b>Excitation/Emission maxima wavelengths:</b> 493 nm / 522 nm
<b>Immunogen Catalog Number:</b> AG28687	<b>Calculated MW:</b> 150 kDa	

## Applications

<b>Tested Applications:</b> IF/ICC	<b>Positive Controls:</b> IF/ICC : HepG2 cells,
<b>Species Specificity:</b> human	

## Background Information

KDM3A, also name as JMJD1A, JHDM2A, JMJD1, JMJD1A, KIAA0742 and TSGA, belongs to the JHDM2 histone demethylase family. It is a histone demethylase that specifically demethylates 'Lys-9' of histone H3, thereby playing a central role in histone code. It is involved in spermatogenesis by regulating expression of target genes such as PRM1 and TMP1 which are required for packaging and condensation of sperm chromatin. It is involved in obesity resistance through regulation of metabolic genes such as PPARA and UCP1. (PubMed:16603237), JMJD1A is a useful biomarker for hypoxic tumor cells and a prognostic marker that could be a promising therapeutic target against CRC.

## Storage

**Storage:**  
Store at -20°C. Avoid exposure to light. Stable for one year after shipment.  
**Storage Buffer:**  
PBS with 50% Glycerol, 0.05% Proclin300, 0.5% BSA, pH 7.3.  
Aliquoting is unnecessary for -20°C storage

For technical support and original validation data for this product please contact:

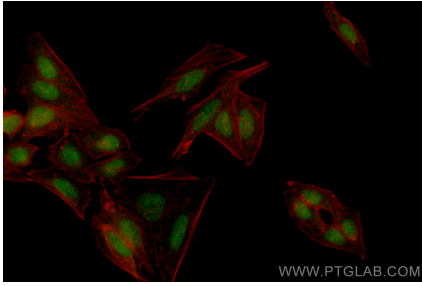
T: 4006900926

E: [Proteintech-CN@ptglab.com](mailto:Proteintech-CN@ptglab.com)

W: [ptgcn.com](http://ptgcn.com)

**This product is exclusively available under Proteintech Group brand and is not available to purchase from any other manufacturer.**

## Selected Validation Data



Immunofluorescent analysis of (4% PFA) fixed HepG2 cells using CoraLite® Plus 488 KDM3A, JMJD1A antibody (CL488-83571-6, Clone: 240532E2 ) at dilution of 1:200.