

For Research Use Only

CoraLite® Plus 488-conjugated INTS4 Recombinant antibody

Catalog Number:CL488-83590-5



Basic Information

Catalog Number:

CL488-83590-5

Size:

1000 µg/ml

Source:

Rabbit

Isotype:

IgG

Immunogen Catalog Number:

AG9116

GenBank Accession Number:

BC009995

GeneID (NCBI):

92105

UNIPROT ID:

Q96HW7

Full Name:

integrator complex subunit 4

Calculated MW:

963aa,108 kDa; 505aa,57 kDa

Purification Method:

Protein A purification

CloneNo.:

240579H4

Recommended Dilutions:

IF/ICC 1:50-1:500

Excitation/Emission maxima
wavelengths:

493 nm / 522 nm

Applications

Tested Applications:

IF/ICC

Species Specificity:

human

Positive Controls:

IF/ICC : HeLa cells,

Background Information

Integrator complex subunit 4 (INTS4), a helical repeat protein, plays a key role in stabilizing nuclease domains and other components. INTS4 is a specific and conserved interaction partner of INTS9/11 heterodimer that does not interact with either subunit individually (PMID: 29471365). INTS4 plays a role in achieving a compact nuclease/pseudonuclease configuration resembling that observed for CPSF73/100 in the histone-processing machinery (PMID: 33548203).

Storage

Storage:

Store at -20°C. Avoid exposure to light. Stable for one year after shipment.

Storage Buffer:

PBS with 50% Glycerol, 0.05% Proclin300, 0.5% BSA, pH 7.3.

Aliquoting is unnecessary for -20°C storage

For technical support and original validation data for this product please contact:

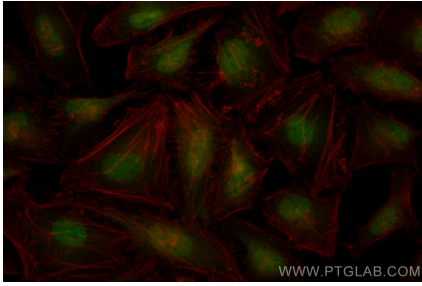
T: 4006900926

E: Proteintech-CN@ptglab.com

W: ptgcn.com

This product is exclusively available under Proteintech Group brand and is not available to purchase from any other manufacturer.

Selected Validation Data



Immunofluorescent analysis of (4% PFA) fixed HeLa cells using CoraLite® Plus 488 INTS4 antibody (CL488-83590-5, Clone: 240579H4) at dilution of 1:200.