

For Research Use Only

CoraLite® Plus 488-conjugated Cathepsin D Recombinant antibody

Catalog Number: CL488-83743-5



Basic Information

Catalog Number:

CL488-83743-5

Size:

1000 µg/ml

Source:

Rabbit

Isotype:

IgG

GenBank Accession Number:

NM_001909.5

GeneID (NCBI):

1509

UNIPROT ID:

P07339

Full Name:

cathepsin D

Calculated MW:

45kDa

Observed MW:

32 kDa, 48 kDa, 52 kDa

Purification Method:

Protein A purification

CloneNo.:

240775G2

Recommended Dilutions:

IF/ICC 1:50-1:500

Excitation/Emission maxima
wavelengths:

493 nm / 522 nm

Applications

Tested Applications:

IF/ICC

Species Specificity:

human

Positive Controls:

IF/ICC : MCF-7 cells,

Background Information

CTSD (Cathepsin D) also named CPSD, belongs to the peptidase A1 family. It is ubiquitously expressed and is involved in proteolytic degradation, cell invasion, and apoptosis. Human CTSD is synthesized as a 52-kDa precursor that is converted into an active 48-kDa single-chain intermediate in the endosomes, and then into a fully active mature form, composed of a 34-kDa heavy chain and a 14-kDa light chain, in the lysosomes. It is a lysosomal acid protease found in neutrophils and monocytes and involved in the pathogenesis of several diseases such as breast cancer and possibly Alzheimer disease (PMID: 27114232, PMID: 30717773, PMID: 30051532).

Storage

Storage:

Store at -20°C. Avoid exposure to light. Stable for one year after shipment.

Storage Buffer:

PBS with 50% Glycerol, 0.05% Proclin300, 0.5% BSA, pH 7.3.

Aliquoting is unnecessary for -20°C storage

For technical support and original validation data for this product please contact:

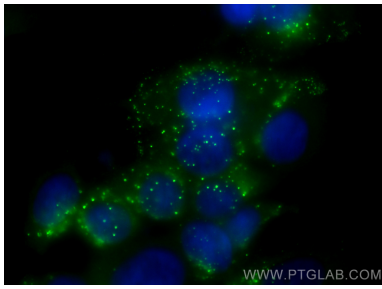
T: 4006900926

E: Proteintech-CN@ptglab.com

W: ptgcn.com

This product is exclusively available under Proteintech Group brand and is not available to purchase from any other manufacturer.

Selected Validation Data



Immunofluorescent analysis of (-20°C Methanol)
fixed MCF-7 cells using CoraLite® Plus 488
Cathepsin D antibody (CL488-83743-5, Clone:
240775G2) at dilution of 1:200.