

For Research Use Only

CoraLite® Plus 488-conjugated CSNK2A1 Recombinant antibody

Catalog Number:CL488-83805-4



Basic Information

Catalog Number:

CL488-83805-4

Size:

1000 µg/ml

Source:

Rabbit

Isotype:

IgG

Immunogen Catalog Number:

AG1452

GenBank Accession Number:

BC011668

GeneID (NCBI):

1457

UNIPROT ID:

P68400

Full Name:

casein kinase 2, alpha 1 polypeptide

Calculated MW:

45 kDa

Observed MW:

40-45 kDa

Purification Method:

Protein A purification

CloneNo.:

240862A7

Recommended Dilutions:

IF/ICC 1:50-1:500

Excitation/Emission maxima

wavelengths:

493 nm / 522 nm

Applications

Tested Applications:

IF/ICC

Species Specificity:

human, mouse, rat

Positive Controls:

IF/ICC : HepG2 cells,

Background Information

CSNK2A1(Casein kinase II subunit alpha) is also named as CK2A1 and belongs to the CK2 subfamily. The CSNK2A1 gene contains 8 exons whose sequences comprise bases 102 to 824 of the coding region of the human casein kinase II alpha subunit. Casein kinase II is a ubiquitous protein-serine/threonine kinase in eukaryotic cells that catalyzes the phosphorylation of many protein substrates and has been regarded as a second-messenger-independent protein kinase. This enzyme is composed of an α subunit (37 to 44kDa) and a β subunit (24 to 28 kDa) and exists as an $\alpha 2 \beta 2$ tetramer (PMID:1448100). Casein kinase 2 has been found to be increased at protein level and up-regulated at the level of enzyme activity in the majority of cancers. However, elevated levels of casein kinase 2 are present in certain normal organs such as brain and testes.

Storage

Storage:

Store at -20°C. Avoid exposure to light. Stable for one year after shipment.

Storage Buffer:

PBS with 50% Glycerol, 0.05% Proclin300, 0.5% BSA, pH 7.3.

Aliquoting is unnecessary for -20°C storage

For technical support and original validation data for this product please contact:

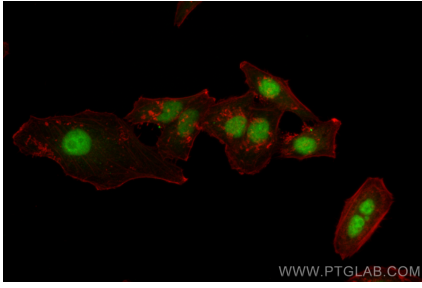
T: 4006900926

E: Proteintech-CN@ptglab.com

W: ptgcn.com

This product is exclusively available under Proteintech Group brand and is not available to purchase from any other manufacturer.

Selected Validation Data



Immunofluorescent analysis of (4% PFA) fixed HepG2 cells using CoraLite® Plus 488 CSNK2A1 antibody (CL488-83805-4, Clone: 240862A7) at dilution of 1:200.