

For Research Use Only

CoraLite® Plus 488-conjugated CNNM4 Recombinant antibody

Catalog Number:CL488-83824-5



Basic Information

Catalog Number:

CL488-83824-5

Size:

1000 µg/ml

Source:

Rabbit

Isotype:

IgG

Immunogen Catalog Number:

AG5121

GenBank Accession Number:

BC063295

GeneID (NCBI):

26504

UNIPROT ID:

Q6P4Q7

Full Name:

cyclin M4

Calculated MW:

87 kDa

Purification Method:

Protein A purification

CloneNo.:

240873C1

Recommended Dilutions:

IF/ICC 1:50-1:500

Excitation/Emission maxima

wavelengths:

493 nm / 522 nm

Applications

Tested Applications:

IF/ICC

Species Specificity:

human

Positive Controls:

IF/ICC : MCF-7 cells,

Background Information

Ancient conserved domain-containing protein 4/cyclin M4 (CNNM4), a membrane protein that stimulates Mg²⁺ efflux, binds phosphatase of regenerating liver (PRL), which is frequently overexpressed in malignant human cancers (PMID: 25347473). CNNM4 is predominant in the brain, bone marrow, immune system, and especially abundant in the intestinal tract. CNNM4 localizes at the basolateral membrane of the intestinal epithelia and mediates transcellular Mg²⁺ transport (PMID: 27006114).

Storage

Storage:

Store at -20°C. Avoid exposure to light. Stable for one year after shipment.

Storage Buffer:

PBS with 50% Glycerol, 0.05% Proclin300, 0.5% BSA, pH 7.3.

Aliquoting is unnecessary for -20°C storage

For technical support and original validation data for this product please contact:

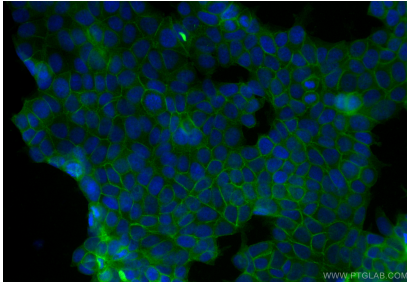
T: 4006900926

E: Proteintech-CN@ptglab.com

W: ptgcn.com

This product is exclusively available under Proteintech Group brand and is not available to purchase from any other manufacturer.

Selected Validation Data



Immunofluorescent analysis of (4% PFA) fixed MCF-7 cells using CoraLite® Plus 488 CNNM4 antibody (CL488-83824-5, Clone: 240873C1) at dilution of 1:200.