

For Research Use Only

CoraLite® Plus 488-conjugated TFPI Recombinant antibody

Catalog Number:CL488-83838-5



Basic Information

Catalog Number:

CL488-83838-5

Size:

1000 µg/ml

Source:

Rabbit

Isotype:

IgG

GenBank Accession Number:

NM_006287.6

GeneID (NCBI):

7035

UNIPROT ID:

P10646-1

Full Name:

tissue factor pathway inhibitor
(lipoprotein-associated coagulation
inhibitor)

Calculated MW:

35 kDa

Observed MW:

40 kDa

Purification Method:

Protein A purification

CloneNo.:

240977B1

Recommended Dilutions:

IF/ICC 1:50-1:500

Excitation/Emission maxima
wavelengths:

493 nm / 522 nm

Applications

Tested Applications:

IF/ICC

Species Specificity:

human

Positive Controls:

IF/ICC : HepG2 cells,

Background Information

Tissue factor pathway inhibitor (TFPI) is a critical anticoagulant protein present in endothelium and platelets. TFPI is produced as two major isoforms in humans, TFPIa and TFPIb that result from alternative splicing. The TFPIb isoform localizes to the endothelium surface where it is a potent inhibitor of tissue factor-factor VIIa complexes that initiate blood coagulation. The TFPIa isoform is present in platelets. TFPI is a Kunitz-type serine protease inhibitor that exerts anticoagulant activity by blocking early procoagulant stimuli. TFPI can enhance anti-thrombotic treatment in sepsis, inflammatory diseases, and cardiovascular diseases.

Storage

Storage:

Store at -20°C. Avoid exposure to light. Stable for one year after shipment.

Storage Buffer:

PBS with 50% Glycerol, 0.05% Proclin300, 0.5% BSA, pH 7.3.

Aliquoting is unnecessary for -20°C storage

For technical support and original validation data for this product please contact:

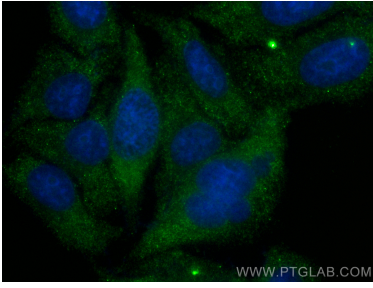
T: 4006900926

E: Proteintech-CN@ptglab.com

W: ptgcn.com

This product is exclusively available under Proteintech Group brand and is not available to purchase from any other manufacturer.

Selected Validation Data



Immunofluorescent analysis of (-20°C Ethanol) fixed HepG2 cells using CoraLite® Plus 488 TFPI antibody (CL488-83838-5, Clone: 240977B1) at dilution of 1:200.