

For Research Use Only

CoraLite® Plus 488-conjugated Ins1 Recombinant antibody

Catalog Number:CL488-83867



Basic Information

Catalog Number: CL488-83867	GenBank Accession Number: NM_008386	Purification Method: Protein A purification
Size: 1000 µg/ml	GeneID (NCBI): 16333	CloneNo.: 240798G4
Source: Rabbit	UNIPROT ID: P01325	Recommended Dilutions: IF-P 1:50-1:500
Isotype: IgG	Full Name: insulin I	Excitation/Emission maxima wavelengths: 493 nm / 522 nm
Immunogen Catalog Number: AG29988	Calculated MW: 12 kDa	
	Observed MW: 12 kDa	

Applications

Tested Applications: IF-P	Positive Controls: IF-P : mouse pancreas tissue,
Species Specificity: mouse, rat	

Background Information

Insulin 1 is a peptide hormone that plays a vital role in the regulation of carbohydrate and lipid metabolism. The encoded precursor protein undergoes proteolytic cleavage to produce a disulfide-linked heterodimeric functional protein that is stored in secretory granules. An increase in blood glucose levels, among others, induces the release of insulin from the secretory granules. Mice deficient in the functional hormone encoded by this gene develop diabetes mellitus.

Storage

Storage:
Store at -20°C. Avoid exposure to light. Stable for one year after shipment.
Storage Buffer:
PBS with 50% Glycerol, 0.05% Proclin300, 0.5% BSA, pH 7.3.
Aliquoting is unnecessary for -20°C storage

For technical support and original validation data for this product please contact:

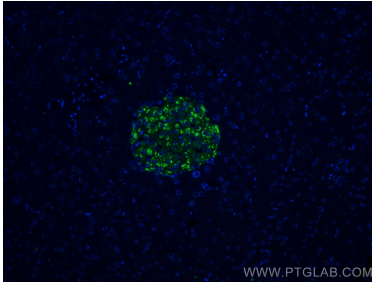
T: 4006900926

E: Proteintech-CN@ptglab.com

W: ptgcn.com

This product is exclusively available under Proteintech Group brand and is not available to purchase from any other manufacturer.

Selected Validation Data



Immunofluorescent analysis of (4% PFA) fixed paraffin-embedded mouse pancreas tissue using CoraLite® Plus 488 Ins1 antibody (CL488-83867, Clone: 240798G4) at dilution of 1:200. Heat mediated antigen retrieval with Tris-EDTA buffer (pH 9.0).