

For Research Use Only

CoraLite® Plus 488-conjugated CSDC2 Recombinant antibody

Catalog Number:CL488-83886-6



Basic Information

Catalog Number:

CL488-83886-6

Size:

1000 µg/ml

Source:

Rabbit

Isotype:

IgG

Immunogen Catalog Number:

AG16216

GenBank Accession Number:

BC067113

GeneID (NCBI):

27254

UNIPROT ID:

Q9Y534

Full Name:

cold shock domain containing C2,

RNA binding

Calculated MW:

153 aa, 17 kDa

Purification Method:

Protein A purification

CloneNo.:

241031A11

Recommended Dilutions:

IF/ICC 1:50-1:500

Excitation/Emission maxima

wavelengths:

493 nm / 522 nm

Applications

Tested Applications:

IF/ICC

Species Specificity:

human

Positive Controls:

IF/ICC : HeLa cells,

Background Information

PIPPIN, also known as CSDC2 (Cold shock domain-containing protein C2) is an RNA - binding protein (RBP), highly enriched in the rat brain, specifically enriched in some pyramidal neurons of the cerebral cortex and in the Purkinje cells of the cerebellum (PMID: 10446180). PIPPIN has the potential to undergo different posttranslational modifications and might be a good candidate to regulate the synthesis of specific proteins in response to extracellular stimuli. Nuclear CSDC2 is connected to proliferation and cytoplasmic CSDC2 to terminal differentiation in the decidua and that CSDC2 could regulate differentiation during decidua development (PMID: 30078185, PMID: 17053029).

Storage

Storage:

Store at -20°C. Avoid exposure to light. Stable for one year after shipment.

Storage Buffer:

PBS with 50% Glycerol, 0.05% Proclin300, 0.5% BSA, pH 7.3.

Aliquoting is unnecessary for -20°C storage

For technical support and original validation data for this product please contact:

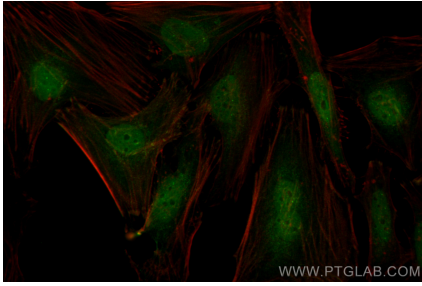
T: 4006900926

E: Proteintech-CN@ptglab.com

W: ptgcn.com

This product is exclusively available under Proteintech Group brand and is not available to purchase from any other manufacturer.

Selected Validation Data



Immunofluorescent analysis of (4% PFA) fixed HeLa cells using CoraLite® Plus 488 CSDC2 antibody (CL488-83886-6, Clone: 241031A11) at dilution of 1:200.