

For Research Use Only

# CoraLite® Plus 488-conjugated TLE3 Recombinant antibody

Catalog Number:CL488-83955-4



## Basic Information

Catalog Number:

CL488-83955-4

Size:

1000 µg/ml

Source:

Rabbit

Isotype:

IgG

Immunogen Catalog Number:

AG1930

GenBank Accession Number:

BC015729

GeneID (NCBI):

7090

UNIPROT ID:

Q04726

Full Name:

transducin-like enhancer of split 3  
(E(sp1) homolog, Drosophila)

Calculated MW:

772 aa, 83 kDa

Purification Method:

Protein A purification

CloneNo.:

240680G3

Recommended Dilutions:

IF/ICC 1:50-1:500

Excitation/Emission maxima  
wavelengths:

493 nm / 522 nm

## Applications

Tested Applications:

IF/ICC

Species Specificity:

human

Positive Controls:

IF/ICC : HepG2 cells,

## Background Information

TLE3, also named as KIAA1547 and ESG3, belongs to the WD repeat Groucho/TLE family. It is a transcriptional corepressor that binds to a number of transcription factors. It inhibits the transcriptional activation mediated by CTNNB1 and TCF family members in Wnt signaling. The effects of full-length TLE family members may be modulated by association with dominant-negative AES. TLE3 is a member of the transducin-like enhancer of split (TLE) family of proteins that have been implicated in the tumorigenesis and classification of sarcomas. It is a candidate biomarker of response to taxane

## Storage

Storage:

Store at -20°C. Avoid exposure to light. Stable for one year after shipment.

Storage Buffer:

PBS with 50% Glycerol, 0.05% Proclin300, 0.5% BSA, pH 7.3.

Aliquoting is unnecessary for -20°C storage

For technical support and original validation data for this product please contact:

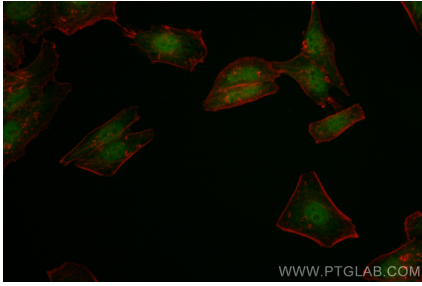
T: 4006900926

E: Proteintech-CN@ptglab.com

W: ptgcn.com

This product is exclusively available under Proteintech Group brand and is not available to purchase from any other manufacturer.

## Selected Validation Data



Immunofluorescent analysis of (4% PFA) fixed HepG2 cells using CoraLite® Plus 488 TLE3 antibody (CL488-83955-4, Clone: 240680G3) at dilution of 1:200.