

For Research Use Only

# CoraLite® Plus 488-conjugated AGXT2L1 Recombinant antibody

Catalog Number:CL488-83984-5



## Basic Information

Catalog Number:

CL488-83984-5

Size:

1000 µg/ml

Source:

Rabbit

Isotype:

IgG

Immunogen Catalog Number:

AG10584

GenBank Accession Number:

BC022526

GeneID (NCBI):

64850

UNIPROT ID:

Q8TBG4

Full Name:

alanine-glyoxylate aminotransferase

2-like 1

Calculated MW:

499 aa, 56 kDa

Purification Method:

Protein A purification

CloneNo.:

241119H5

Recommended Dilutions:

IF/ICC 1:50-1:500

Excitation/Emission maxima

wavelengths:

493 nm / 522 nm

## Applications

Tested Applications:

IF/ICC

Species Specificity:

human, mouse

Positive Controls:

IF/ICC : U2OS cells,

## Background Information

Alanine-glyoxylate aminotransferase 2-like 1 (AGXT2L1), also called ethanolamine phosphate phospholyase (ETNPPL), is a brain enzyme, so-named after its similarity to AGXT2 (36% sequence identity), that may be involved in the pathogenesis of severe neuropsychiatric disturbances(PMID: 23761375). AGXT2L1 is significantly down-regulated in cancerous tissues and may be a tumor suppressor(PMID: 26294768,

## Storage

Storage:

Store at -20°C. Avoid exposure to light. Stable for one year after shipment.

Storage Buffer:

PBS with 50% Glycerol, 0.05% Proclin300, 0.5% BSA, pH 7.3.

Aliquoting is unnecessary for -20°C storage

For technical support and original validation data for this product please contact:

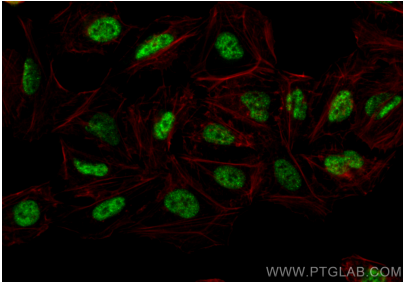
T: 4006900926

E: Proteintech-CN@ptglab.com

W: ptgcn.com

This product is exclusively available under Proteintech Group brand and is not available to purchase from any other manufacturer.

## Selected Validation Data



Immunofluorescent analysis of (4% PFA) fixed U2OS cells using CoraLite® Plus 488 AGXT2L1 antibody (CL488-83984-5, Clone: 241119H5) at dilution of 1:200.