

For Research Use Only

CoraLite® Plus 488-conjugated PRC1 Recombinant antibody

Catalog Number: CL488-84041-2



Basic Information

Catalog Number:

CL488-84041-2

Size:

1000 µg/ml

Source:

Rabbit

Isotype:

IgG

Immunogen Catalog Number:

AG8028

GenBank Accession Number:

BC003138

GeneID (NCBI):

9055

UNIPROT ID:

O43663

Full Name:

protein regulator of cytokinesis 1

Calculated MW:

72 kDa

Purification Method:

Protein A purification

CloneNo.:

241216H2

Recommended Dilutions:

IF/ICC 1:50-1:500

Excitation/Emission maxima

wavelengths:

493 nm / 522 nm

Applications

Tested Applications:

IF/ICC

Species Specificity:

human

Positive Controls:

IF/ICC : HepG2 cells,

Background Information

PRC1 (protein regulator of cytokinesis 1) is a microtubule-bundling protein that is involved in cytokinesis. Depletion of PRC1 leads to failed cytokinesis. PRC1 is located in the nucleus during interphase, and becomes associated with mitotic spindles in a highly dynamic manner during mitosis, and localizes to the cell mid-body during cytokinesis. PRC1 is a substrate of CDK1 and it was assumed that CDK1 phosphorylation blocks its activity during metaphase. Three isoforms of PRC1 exist due to the alternative splicing, with predictive molecular weight of 71.6 kDa, 70.2 kDa and 66.2 kDa, respectively.

Storage

Storage:

Store at -20°C. Avoid exposure to light. Stable for one year after shipment.

Storage Buffer:

PBS with 50% Glycerol, 0.05% Proclin300, 0.5% BSA, pH 7.3.

Aliquoting is unnecessary for -20°C storage

For technical support and original validation data for this product please contact:

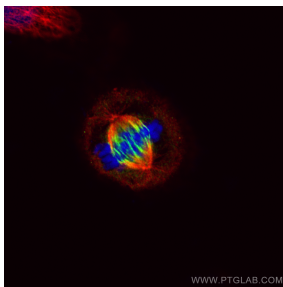
T: 4006900926

E: Proteintech-CN@ptglab.com

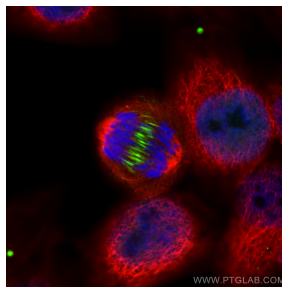
W: ptgcn.com

This product is exclusively available under Proteintech Group brand and is not available to purchase from any other manufacturer.

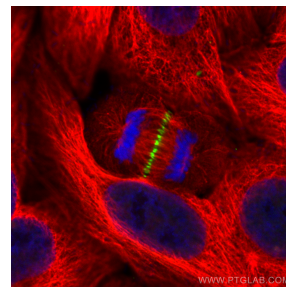
Selected Validation Data



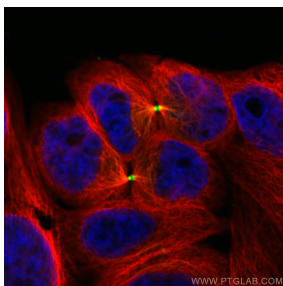
Immunofluorescent analysis of (4% PFA) fixed HepG2 cells using CoraLite® Plus 488 PRC1 antibody (CL488-84041-2, Clone: 241216H2) at dilution of 1:200, Alpha Tubulin antibody (66031-1-Ig, Clone: 1E4C11, red).



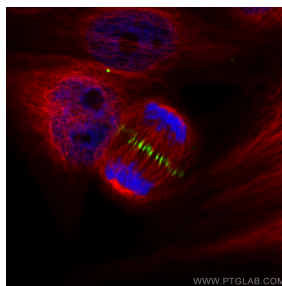
Immunofluorescent analysis of (4% PFA) fixed HepG2 cells using CoraLite® Plus 488 PRC1 antibody (CL488-84041-2, Clone: 241216H2) at dilution of 1:200, Alpha Tubulin antibody (66031-1-Ig, Clone: 1E4C11, red).



Immunofluorescent analysis of (4% PFA) fixed HepG2 cells using CoraLite® Plus 488 PRC1 antibody (CL488-84041-2, Clone: 241216H2) at dilution of 1:200, Alpha Tubulin antibody (66031-1-Ig, Clone: 1E4C11, red).



Immunofluorescent analysis of (4% PFA) fixed HepG2 cells using CoraLite® Plus 488 PRC1 antibody (CL488-84041-2, Clone: 241216H2) at dilution of 1:200, Alpha Tubulin antibody (66031-1-Ig, Clone: 1E4C11, red).



Immunofluorescent analysis of (4% PFA) fixed HepG2 cells using CoraLite® Plus 488 PRC1 antibody (CL488-84041-2, Clone: 241216H2) at dilution of 1:200, Alpha Tubulin antibody (66031-1-Ig, Clone: 1E4C11, red).