

For Research Use Only

# CoraLite® Plus 488-conjugated CASQ2 Recombinant antibody

Catalog Number:CL488-84056-6



## Basic Information

Catalog Number:

CL488-84056-6

Size:

1000 µg/ml

Source:

Rabbit

Isotype:

IgG

Immunogen Catalog Number:

AG33584

GenBank Accession Number:

BC022288

GeneID (NCBI):

845

UNIPROT ID:

O14958

Full Name:

calsequestrin 2 (cardiac muscle)

Calculated MW:

46 kDa

Observed MW:

46-55 kDa

Purification Method:

Protein A purification

CloneNo.:

241211A3

Recommended Dilutions:

IF/ICC 1:50-1:500

Excitation/Emission maxima

wavelengths:

493 nm / 522 nm

## Applications

Tested Applications:

IF/ICC, FC (Intra)

Species Specificity:

human, mouse, rat, pig

Positive Controls:

IF/ICC : C2C12 cells,

## Background Information

Calsequestrin (CASQ) is a Ca<sup>2+</sup>-binding protein present primarily in junctional sarcoplasmic reticulum of skeletal and cardiac muscle; the cardiac form (CASQ2) is encoded by a separate gene. The primary role of CASQ2 is buffering of the sarcoplasmic reticulum Ca<sup>2+</sup> ions, but another role for CASQ2 has emerged recently: CASQ2 regulates the open probability of ryanodine receptor 2 (RyR2). Mutations in CASQ2 cause stress-induced polymorphic ventricular tachycardia, also referred to as catecholaminergic polymorphic ventricular tachycardia 2 (CPVT2), a disease characterized by bidirectional ventricular tachycardia that may lead to cardiac arrest.

## Storage

Storage:

Store at -20°C. Avoid exposure to light. Stable for one year after shipment.

Storage Buffer:

PBS with 50% Glycerol, 0.05% Proclin300, 0.5% BSA, pH 7.3.

Aliquoting is unnecessary for -20°C storage

For technical support and original validation data for this product please contact:

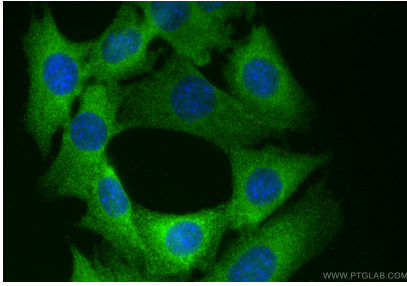
T: 4006900926

E: [Proteintech-CN@ptglab.com](mailto:Proteintech-CN@ptglab.com)

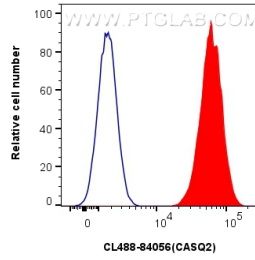
W: [ptgcn.com](http://ptgcn.com)

**This product is exclusively available under Proteintech Group brand and is not available to purchase from any other manufacturer.**

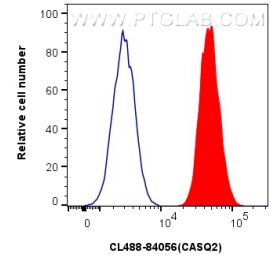
## Selected Validation Data



Immunofluorescent analysis of (4% PFA) fixed C2C12 cells using CoraLite® Plus 488 CASQ2 antibody (CL488-84056-6, Clone: 241211A3) at dilution of 1:200.



1x10<sup>6</sup> U2OS cells were intracellularly stained with 0.25 ug CoraLite® Plus 488 Casq2 Recombinant Antibody (CL488-84056-6, Clone:241211A3)(red), or 0.25 ug CoraLite® Plus 488 Rabbit IgG Isotype Control Recombinant Antibody (CL488-98136, Clone: 240953C9) (blue). Cells were fixed with 4% PFA and permeabilized with Flow Cytometry Perm Buffer (PF00011-C).



1x10<sup>6</sup> A549 cells were intracellularly stained with 0.25 ug CoraLite® Plus 488 Casq2 Recombinant Antibody (CL488-84056-6, Clone:241211A3)(red), or 0.25 ug CoraLite® Plus 488 Rabbit IgG Isotype Control Recombinant Antibody (CL488-98136, Clone: 240953C9) (blue). Cells were fixed with 4% PFA and permeabilized with Flow Cytometry Perm Buffer (PF00011-C).