

For Research Use Only

CoraLite® Plus 488-conjugated Complement factor B Recombinant antibody

Catalog Number: CL488-84101-5



Basic Information

Catalog Number: CL488-84101-5	GenBank Accession Number: BC007990	Purification Method: Protein A purification
Size: 1000 µg/ml	GeneID (NCBI): 629	CloneNo.: 241141A8
Source: Rabbit	UNIPROT ID: P00751	Recommended Dilutions: IF/ICC 1:50-1:500
Isotype: IgG	Full Name: complement factor B	Excitation/Emission maxima wavelengths: 493 nm / 522 nm
Immunogen Catalog Number: AG0226	Calculated MW: 86 kDa	
	Observed MW: 93-100 kDa	

Applications

Tested Applications: IF/ICC	Positive Controls: IF/ICC : HepG2 cells,
Species Specificity: human, mouse, rat	

Background Information

Complement factor B (CFB) is a component of the alternative pathway of complement activation. Complement factor B is a 93-100 kDa glycoprotein and is cleaved into Ba (33 kDa) and Bb (60 kDa) by factor D in the presence of C3b (PMID: 11025450). The active subunit Bb is a serine protease that is associated with C3b and forms the alternative pathway for C3 convertase. Bb is involved in the proliferation of preactivated B lymphocytes, while Ba inhibits their proliferation.

Storage

Storage:
Store at -20°C. Avoid exposure to light. Stable for one year after shipment.
Storage Buffer:
PBS with 50% Glycerol, 0.05% Proclin300, 0.5% BSA, pH 7.3.
Aliquoting is unnecessary for -20°C storage

For technical support and original validation data for this product please contact:

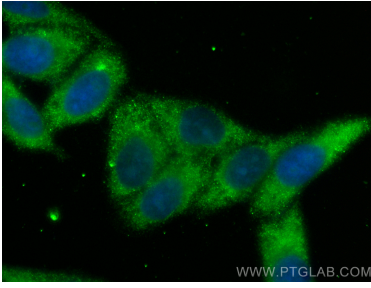
T: 4006900926

E: Proteintech-CN@ptglab.com

W: ptgcn.com

This product is exclusively available under Proteintech Group brand and is not available to purchase from any other manufacturer.

Selected Validation Data



Immunofluorescent analysis of (-20°C Ethanol) fixed HepG2 cells using CoraLite® Plus 488 Complement factor B antibody (CL488-84101-5, Clone: 241141A8) at dilution of 1:200.