

For Research Use Only

CoraLite® Plus 488-conjugated DDX24 Recombinant antibody

Catalog Number:CL488-84103-6



Basic Information

Catalog Number:

CL488-84103-6

Size:

1000 µg/ml

Source:

Rabbit

Isotype:

IgG

Immunogen Catalog Number:

AG8407

GenBank Accession Number:

BC008847

GeneID (NCBI):

57062

UNIPROT ID:

Q9GZR7

Full Name:

DEAD (Asp-Glu-Ala-Asp) box
polypeptide 24

Calculated MW:

96 kDa

Purification Method:

Protein A purification

CloneNo.:

241145G10

Recommended Dilutions:

IF/ICC 1:50-1:500

Excitation/Emission maxima
wavelengths:

493 nm / 522 nm

Applications

Tested Applications:

IF/ICC

Species Specificity:

human

Positive Controls:

IF/ICC : HeLa cells,

Background Information

DDX24 is a family member of Asp-Glu-Ala-Asp (DEAD) box containing RNA helicases, and DEAD-box RNA helicases are characterized by a conserved DEAD motif. DDX24 was associated with cancer development, viral infection, and vascular malformation.

Storage

Storage:

Store at -20°C. Avoid exposure to light. Stable for one year after shipment.

Storage Buffer:

PBS with 50% Glycerol, 0.05% Proclin300, 0.5% BSA, pH 7.3.

Aliquoting is unnecessary for -20°C storage

For technical support and original validation data for this product please contact:

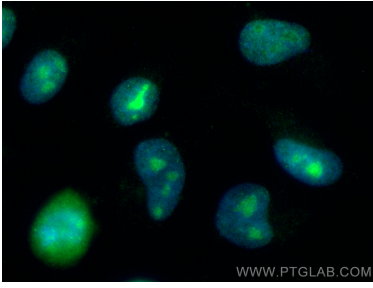
T: 4006900926

E: Proteintech-CN@ptglab.com

W: ptgcn.com

This product is exclusively available under Proteintech Group brand and is not available to purchase from any other manufacturer.

Selected Validation Data



Immunofluorescent analysis of (4% PFA) fixed HeLa cells using CoraLite® Plus 488 DDX24 antibody (CL488-84103-6, Clone: 241145G10) at dilution of 1:200.