

For Research Use Only

CoraLite® Plus 488-conjugated GLI2-Specific Recombinant antibody

Catalog Number:CL488-84141



Basic Information

Catalog Number:

CL488-84141

Size:

1000 ug/ml

Source:

Rabbit

Isotype:

IgG

GenBank Accession Number:

NM_005270

GeneID (NCBI):

14633

UNIPROT ID:

Q0VGT2

Full Name:

GLI family zinc finger 2

Calculated MW:

168 kDa

Observed MW:

80-90 kDa, 130-140 kDa, 160-180 kDa

Purification Method:

Protein A purification

CloneNo.:

241049C10

Recommended Dilutions:

IF/ICC 1:50-1:500

Excitation/Emission maxima wavelengths:

493 nm / 522 nm

Applications

Tested Applications:

IF/ICC

Species Specificity:

human, mouse

Positive Controls:

IF/ICC : HepG2 cells,

Background Information

GLI2, also named as THP, belongs to the GLI C2H2-type zinc-finger protein family. GLI2 play a role during embryogenesis. It binds to the DNA sequence 5'-GAACCACCA-3' which is part of the TRE-2S regulatory element that augments the Tax-dependent enhancer of human T-cell leukemia virus type 1. It is implicated in the transduction of SHH signal. Mutation of GLI2 will cause of holoprosencephaly type 9 (HPE9). Four possible isoforms (hGli2a, b, g, and d) are formed by combinations of two independent alternative splicings, and all the isoforms could bind to a DNA motif, TRE2S. hGli2 a, b, g, and d. These isoforms encode 133-, 131-, 88-, and 86-kDa proteins, respectively.

Storage

Storage:

Store at -20°C. Avoid exposure to light. Stable for one year after shipment.

Storage Buffer:

PBS with 50% Glycerol, 0.05% Proclin300, 0.5% BSA, pH 7.3.

Aliquoting is unnecessary for -20°C storage

For technical support and original validation data for this product please contact:

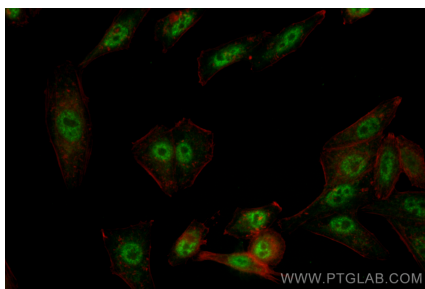
T: 4006900926

E: Proteintech-CN@ptglab.com

W: ptgcn.com

This product is exclusively available under Proteintech Group brand and is not available to purchase from any other manufacturer.

Selected Validation Data



Immunofluorescent analysis of (4% PFA) fixed HepG2 cells using CoraLite® Plus 488 GLI2-Specific antibody (CL488-84141, Clone: 241049C10) at dilution of 1:200.