

For Research Use Only

CoraLite® Plus 488-conjugated POTEA-Specific Recombinant antibody

Catalog Number: CL488-84298



Basic Information

Catalog Number:

CL488-84298

Size:

1000 µg/ml

Source:

Rabbit

Isotype:

IgG

GenBank Accession Number:

NM_001002920

GeneID (NCBI):

340441

UNIPROT ID:

Q658J7

Full Name:

POTE ankyrin domain family, member A

Calculated MW:

56 kDa

Purification Method:

Protein A purification

CloneNo.:

241187F7

Excitation/Emission maxima wavelengths:

493 nm / 522 nm

Applications

Tested Applications:

FC (Intra)

Species Specificity:

human

Background Information

POTE A, also named A26A1 and POTE8, belongs to the POTE family. POTE has an important signaling function in the reproductive system.

Storage

Storage:

Store at -20°C. Avoid exposure to light. Stable for one year after shipment.

Storage Buffer:

PBS with 50% Glycerol, 0.05% Proclin300, 0.5% BSA, pH 7.3.

Aliquoting is unnecessary for -20°C storage

For technical support and original validation data for this product please contact:

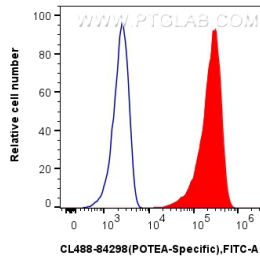
T: 4006900926

E: Proteintech-CN@ptglab.com

W: ptgcn.com

This product is exclusively available under Proteintech Group brand and is not available to purchase from any other manufacturer.

Selected Validation Data



1x10⁶ HeLa cells were intracellularly stained with 0.25 ug Coralite® Plus 488 POTEA-Specific Recombinant Antibody (CL488-84298, Clone:241187F7)(red), or 0.25 ug Rabbit IgG Isotype Control Recombinant Antibody (98136-1-RR, Clone: 240953C9) (blue). Cells were fixed with 4% PFA and permeabilized with Intracellular Staining Permeabilization Wash Buffer.