

For Research Use Only

# CoraLite® Plus 488-conjugated PAX6 Recombinant antibody

Catalog Number: CL488-84345-5



## Basic Information

Catalog Number:

CL488-84345-5

Size:

1000 ug/ml

Source:

Rabbit

Isotype:

IgG

Immunogen Catalog Number:

AG2984

GenBank Accession Number:

BC011953

GeneID (NCBI):

5080

UNIPROT ID:

P26367

Full Name:

paired box 6

Calculated MW:

47 kDa

Observed MW:

47 kDa

Purification Method:

Protein A purification

CloneNo.:

241521G1

Recommended Dilutions:

IF-P 1:50-1:500

Excitation/Emission maxima  
wavelengths:

493 nm / 522 nm

## Applications

Tested Applications:

IF-P

Species Specificity:

human, mouse

Positive Controls:

IF-P: mouse eye tissue,

## Background Information

PAX6, a paired domain and homeodomain-containing transcription factor. Interaction with TRIM11 leads to ubiquitination of PAX6 and its proteasomal degradation. PAX6 is one of the earliest genes expressed in the eye field and considered a master control gene for retinal and eye development. PAX6 also regulates the development of the olfactory, central nervous systems, pituitary, and pancreas. PAX6 mutations can cause complex ocular disorders such as aniridia and Peter's anomaly.

## Storage

Storage:

Store at -20°C. Avoid exposure to light. Stable for one year after shipment.

Storage Buffer:

PBS with 50% Glycerol, 0.05% Proclin300, 0.5% BSA, pH 7.3.

Aliquoting is unnecessary for -20°C storage

For technical support and original validation data for this product please contact:

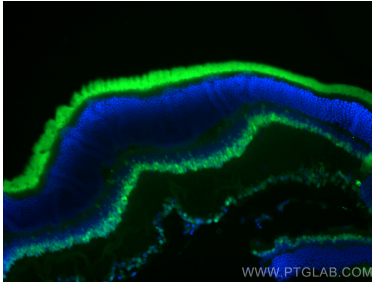
T: 4006900926

E: [Proteintech-CN@ptglab.com](mailto:Proteintech-CN@ptglab.com)

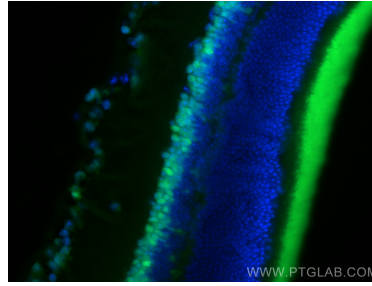
W: [ptgcn.com](http://ptgcn.com)

**This product is exclusively available under Proteintech Group brand and is not available to purchase from any other manufacturer.**

## Selected Validation Data



Immunofluorescent analysis of (4% PFA) fixed paraffin-embedded mouse eye tissue using CoraLite® Plus 488 PAX6 antibody (CL488-84345-5, Clone: 241521G1) at dilution of 1:200. Heat mediated antigen retrieval with Tris-EDTA buffer (pH 9.0).



Immunofluorescent analysis of (4% PFA) fixed paraffin-embedded mouse eye tissue using CoraLite® Plus 488 PAX6 antibody (CL488-84345-5, Clone: 241521G1) at dilution of 1:200. Heat mediated antigen retrieval with Tris-EDTA buffer (pH 9.0).