

For Research Use Only

CoraLite® Plus 488-conjugated Integrin alpha-5 Recombinant antibody

Catalog Number:CL488-84468-4



Basic Information

Catalog Number:

CL488-84468-4

Size:

1000 µg/ml

Source:

Rabbit

Isotype:

IgG

GenBank Accession Number:

BC008786

GeneID (NCBI):

3678

UNIPROT ID:

P08648

Full Name:

integrin, alpha 5 (fibronectin receptor, alpha polypeptide)

Calculated MW:

115 kDa

Observed MW:

140 kDa

Purification Method:

Protein A purification

CloneNo.:

241685A3

Recommended Dilutions:

IF/ICC 1:50-1:500

Excitation/Emission maxima

wavelengths:

493 nm / 522 nm

Applications

Tested Applications:

IF/ICC

Species Specificity:

human, mouse

Positive Controls:

IF/ICC : HeLa cells,

Background Information

Integrins are cell adhesion receptors that are heterodimers composed of non-covalently associated alpha and beta subunits. Integrin alpha 5 (ITGA5), belongs to the integrin alpha chain family, primarily binds to Integrin beta 1 (ITGB1) to form an $\alpha 5 \beta 1$ heterodimer (PMID: 33711961). Integrin $\alpha 5 \beta 1$ is a specific receptor of fibronectin through its arginine-glycine-aspartic acid (RGD) binding site (PMID: 19608542). Integrin $\alpha 5 \beta 1$ plays roles in cell adhesion, migration and matrix formation, and has emerged as an essential mediator in many human carcinomas (PMID: 33408483).

Storage

Storage:

Store at -20°C. Avoid exposure to light. Stable for one year after shipment.

Storage Buffer:

PBS with 50% Glycerol, 0.05% Proclin300, 0.5% BSA, pH 7.3.

Aliquoting is unnecessary for -20°C storage

For technical support and original validation data for this product please contact:

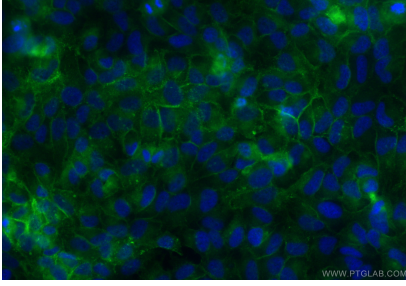
T: 4006900926

E: Proteintech-CN@ptglab.com

W: ptgcn.com

This product is exclusively available under Proteintech Group brand and is not available to purchase from any other manufacturer.

Selected Validation Data



Immunofluorescent analysis of (4% PFA) fixed HeLa cells using CoraLite® Plus 488 Integrin alpha-5 antibody (CL488-84468-4, Clone: 241685A3) at dilution of 1:200.